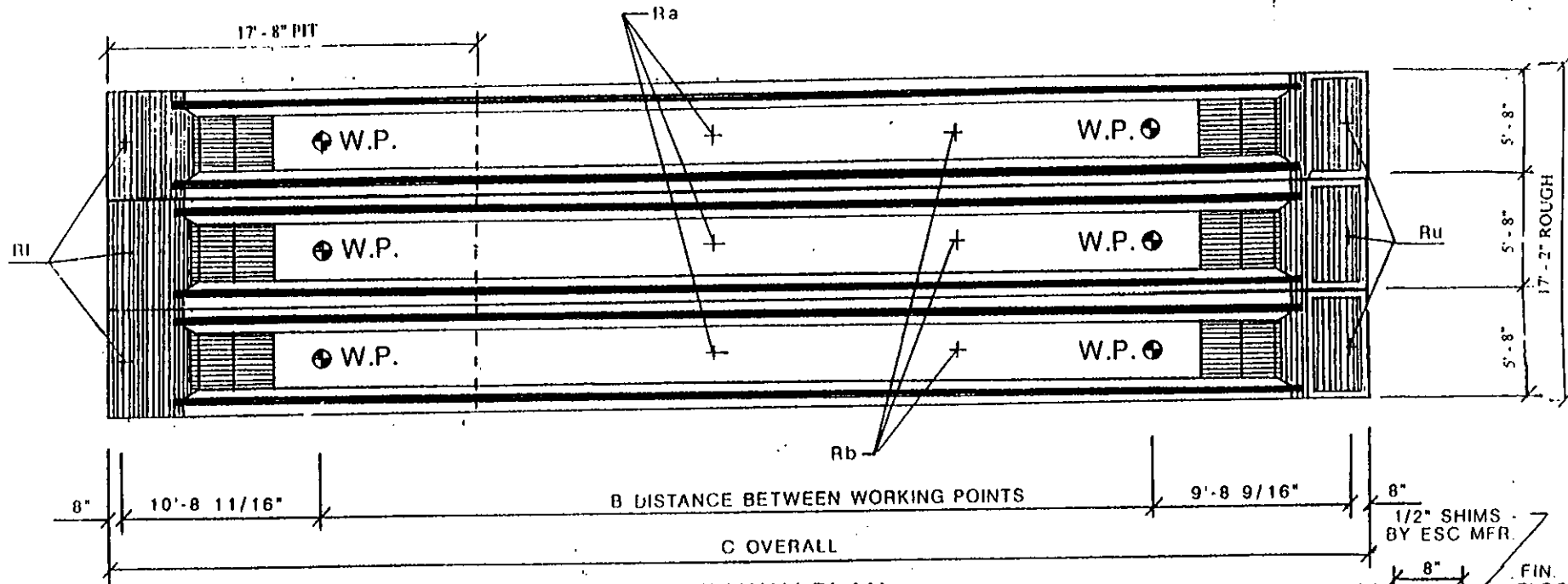


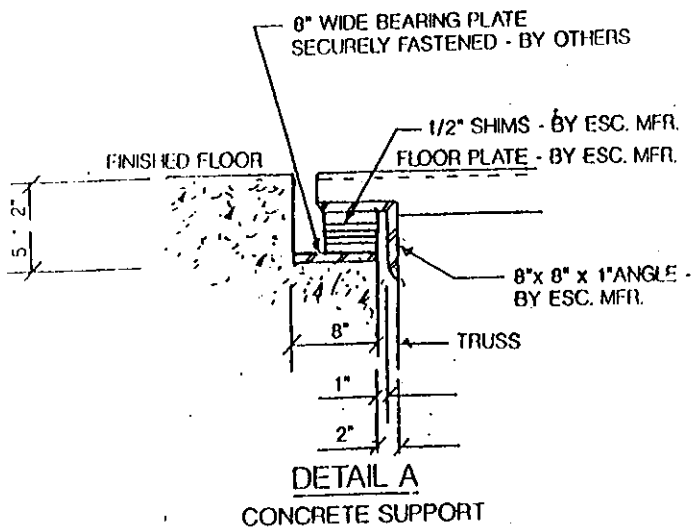
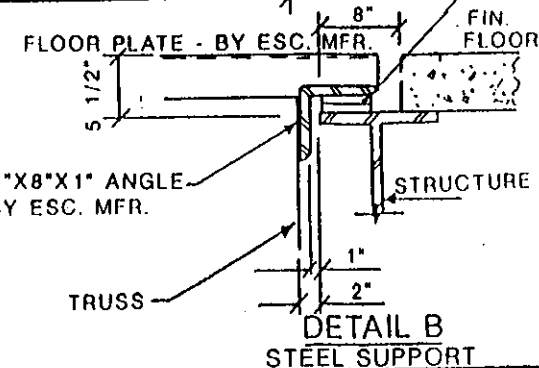
ESCALATORS No. 1 TO 3 SERVE: EXHIBIT HALL TO MEETING ROOM LEVEL



**WELLWAY PLAN**

| ESC. No. | RISE.  | B          | C           |
|----------|--------|------------|-------------|
|          | A      |            |             |
| 1 TO 3   | 47'-6" | 82'-3 1/4" | 104'-0 1/2" |

| ESC. No. | REACTIONS - IN KIPS |      |      |      |
|----------|---------------------|------|------|------|
|          | Rl                  | Ra   | Rb   | Ru   |
| 1 to 3   | 9.0                 | 28.8 | 31.1 | 11.4 |

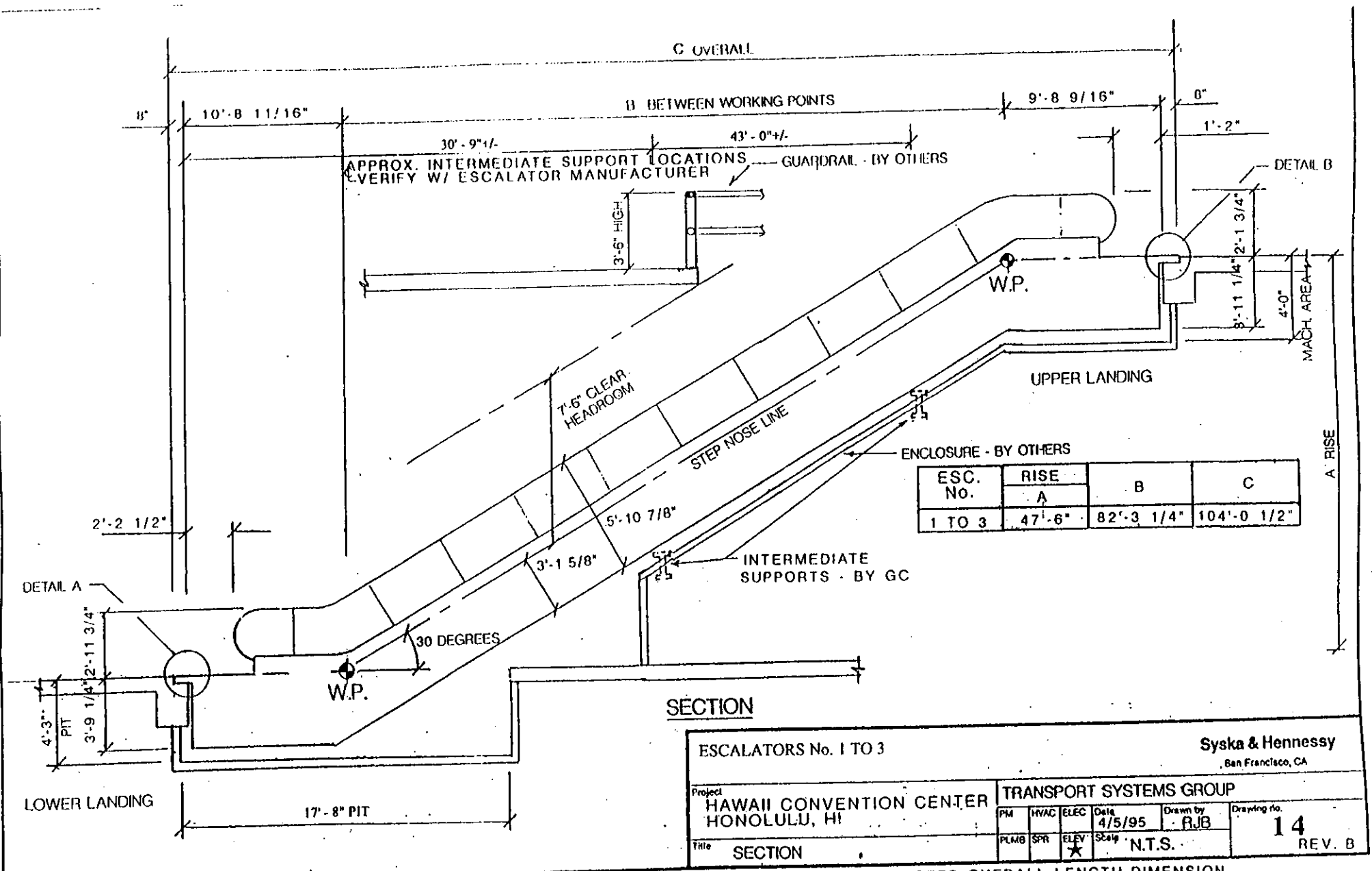


ESCALATORS No. 1 TO 3 = 48" WIDE @ 100 FPM Syka & Hennessy  
San Francisco, CA

|  |  |                         |            |
|--|--|-------------------------|------------|
| Project                                  |  | TRANSPORT SYSTEMS GROUP |            |
| HAWAII CONVENTION CENTER<br>HONOLULU, HI |  | PM                      | HVAC, ELEC |
| Title                                    |  | Date                    | Drawn by   |
| WELLWAY PLAN                             |  | 4/5/95                  | RJB        |
|  |  | PLMB                    | SPR        |
|  |  | ELEV                    | Scale      |
|  |  | ★                       | N.T.S.     |
|  |  |                         | Drawing no |
|  |  |                         | 13         |
|  |  |                         | REV. C     |

REV. A: 5/23/95- BLDG. REDESIGN    REV. B: 5/25/95- REVISED WIDTH, ADDED ROUGH OPENING & REVISED REACTIONS  
 REV. C: 6/5/95- CORRECTED OVERALL LENGTH DIMENSION

13/10



**SECTION**

ESCALATORS No. 1 TO 3

Syska & Hennessy  
San Francisco, CA

Project  
HAWAII CONVENTION CENTER  
HONOLULU, HI

TRANSPORT SYSTEMS GROUP

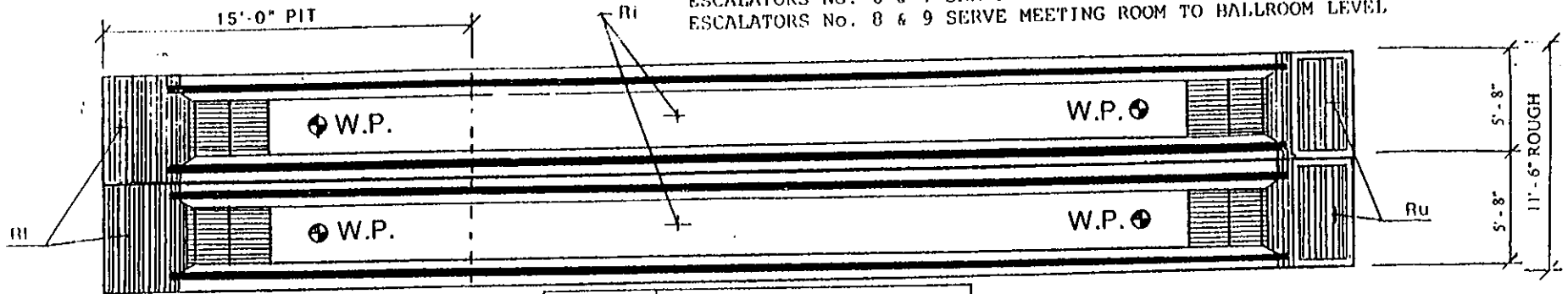
|         |      |      |        |          |             |
|---------|------|------|--------|----------|-------------|
| PM      | INAC | ELEC | Date   | Drawn by | Drawing no. |
| PLMB    | SPR  | ELEV | 4/5/95 | RJB      | 14          |
| Title   |      |      | Scale  | REV. B   |             |
| SECTION |      |      | N.T.S. |          |             |

14  
REV. B

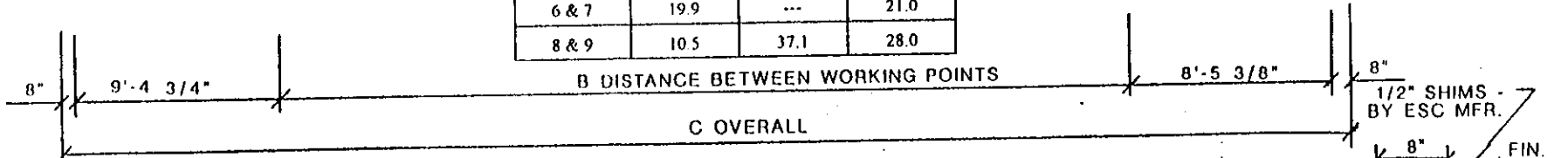
REV. A: 5/23/95- BLDG. REDESIGN & RENUMBERED & REVISED INT. SUPP'T LOCATIONS REV. B:6/5/95- CORRECTED OVERALL LENGTH DIMENSION

14/10

ESCALATORS No. 4 & 5 SERVE EXHIBIT HALL TO PARKING  
 ESCALATORS No. 6 & 7 SERVE PARKING TO MEETING ROOM LEVEL.  
 ESCALATORS No. 8 & 9 SERVE MEETING ROOM TO HALLROOM LEVEL.

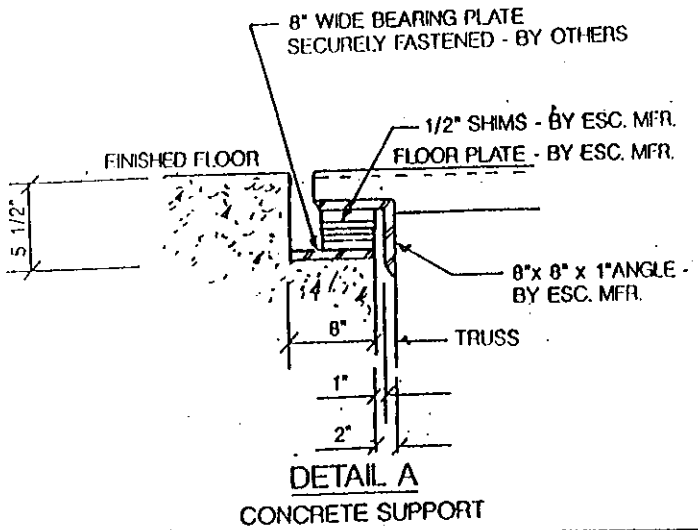
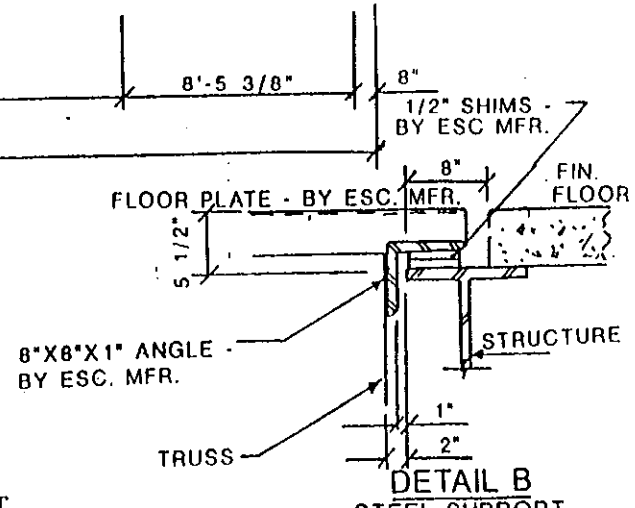


| ESC. No. | REACTIONS - IN KIPS |      |      |
|----------|---------------------|------|------|
|          | Ri                  | Ri   | Ru   |
| 4 & 5    | 13.4                | 47.6 | 35.9 |
| 6 & 7    | 19.9                | ---  | 21.0 |
| 8 & 9    | 10.5                | 37.1 | 28.0 |



**WELLWAY PLAN**

| ESC. No. | RISE   | B          | C          |
|----------|--------|------------|------------|
|          | A      |            |            |
| 4 & 5    | 35'-0" | 60'-7 1/2" | 79'-9 5/8" |
| 6 & 7    | 12'-6" | 21'-7 7/8" | 40'-10"    |
| 8 & 9    | 23'-0" | 39'-10"    | 59'-0 1/8" |



**TWO STEP ARRANGEMENT**

ESCALATORS No. 4 TO 9 = 48' WIDE @ 100 FPM

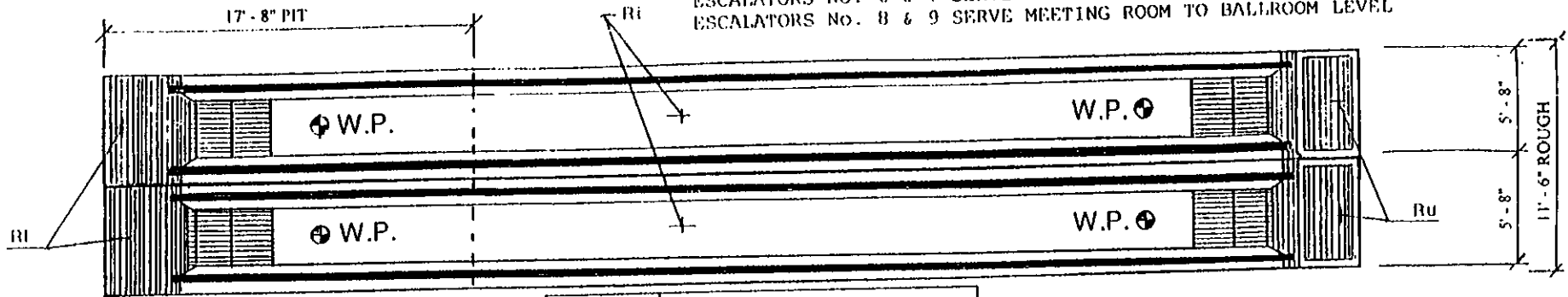
**Syska & Hennessy**  
San Francisco, CA

|  |     |                         |        |
|--|-----|-------------------------|--------|
| Project                                  |     | TRANSPORT SYSTEMS GROUP |        |
| HAWAII CONVENTION CENTER<br>HONOLULU, HI |     | Date                    | 4/5/95 |
| PLMB                                     | SPR | ELEV                    | ★      |
| Title                                    |     | Scale                   | N.T.S. |
| Drawing no                               |     |                         | 15     |
|  |     |                         | REV. C |

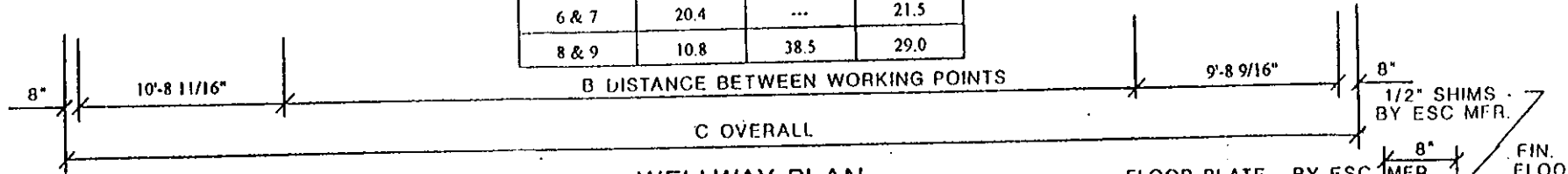
REV. A: 5/24/95 BLDG REDESIGN & RENUMBERED  
 REV. B: 5/25/95- REVISED WIDTH, ADDED ROUGH OPENING  
 REV. C: 6/5/95- CORRECTED OVERALL LENGTH DIMENSION

0/5

ESC. No. 4 & 5 SERVE EXHIBIT HALL TO PARKING  
 ESCALATORS No. 6 & 7 SERVE PARKING TO MEETING ROOM LEVEL  
 ESCALATORS No. 8 & 9 SERVE MEETING ROOM TO BALLROOM LEVEL

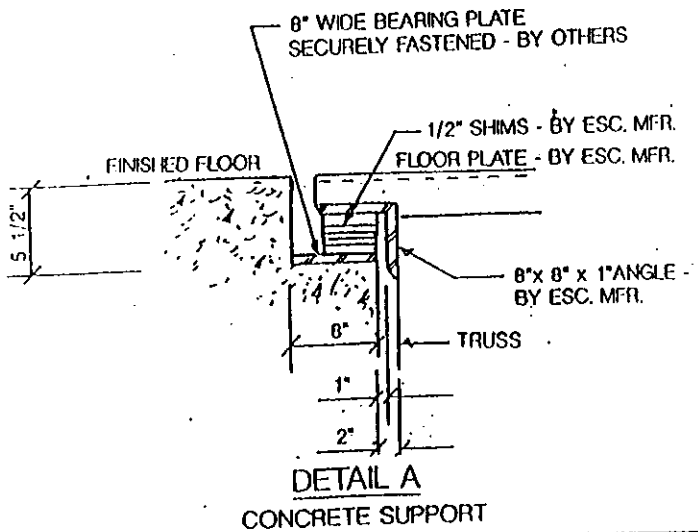
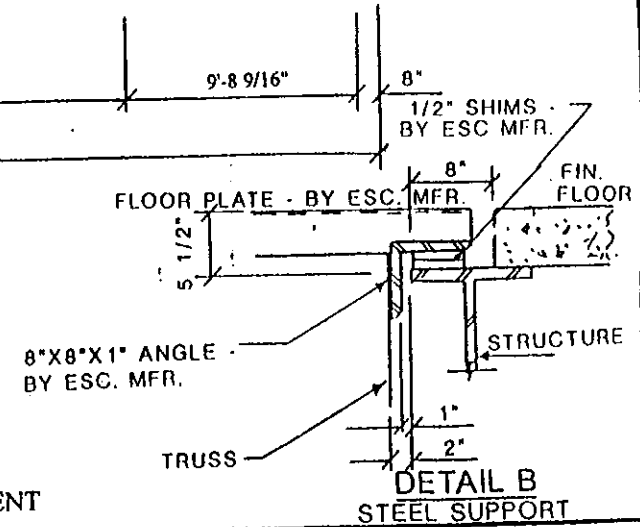


| ESC. No. | REACTIONS - IN KIPS |      |      |
|----------|---------------------|------|------|
|          | RI                  | Ri   | Ru   |
| 4 & 5    | 13.9                | 49.5 | 37.3 |
| 6 & 7    | 20.4                | ...  | 21.5 |
| 8 & 9    | 10.8                | 38.5 | 29.0 |



WELLWAY PLAN

| ESC. No. | RISE   | B          | C          |
|----------|--------|------------|------------|
|          | A      |            |            |
| 4 & 5    | 35'-0" | 60'-7 1/2" | 82'-4 3/4" |
| 6 & 7    | 12'-6" | 21'-7 7/8" | 43'-5 1/8" |
| 8 & 9    | 23'-0" | 39'-10"    | 61'-7 1/4" |



THREE STEP ARRANGEMENT

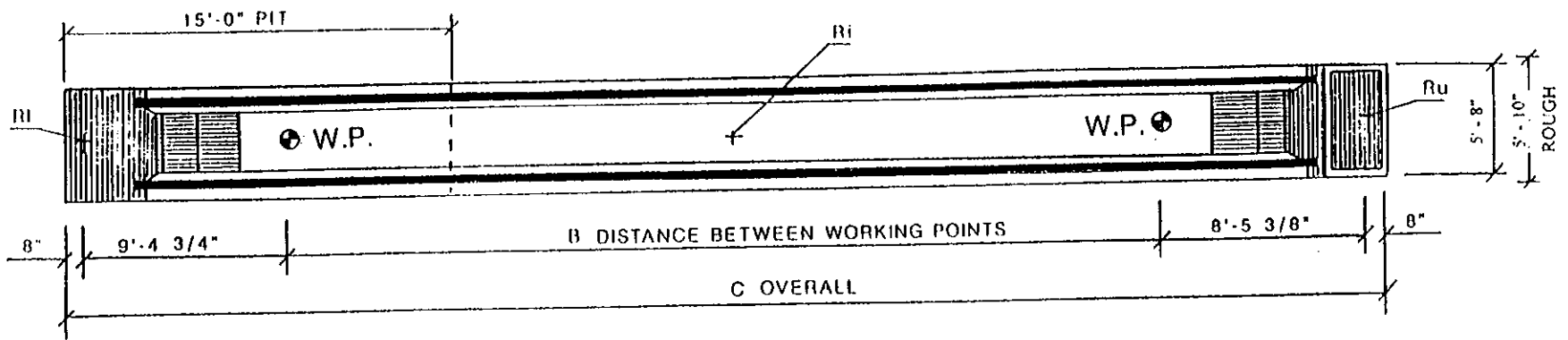
ESCALATORS No. 4 TO 9 = 48' WIDE @ 100 FPM

Syska & Hennessy  
San Francisco, CA

|  |      |                         |          |
|--|------|-------------------------|----------|
| Project                                  |      | TRANSPORT SYSTEMS GROUP |          |
| HAWAII CONVENTION CENTER<br>HONOLULU, HI |      | Date                    | 5/24/95  |
| PM                                       | HWAC | ELEC                    | Drawn by |
| PLMB                                     | RPR  | ELEV                    | RJB      |
| Title                                    |      | Scale                   | N.T.S.   |
| WELLWAY PLAN                             |      | Drawing no              |          |
|  |      | 15A                     |          |
|  |      | REV. B                  |          |

REV. A: 5/25/95- REVISED WIDTH, ADDED ROUGH OPENING REV. B: 6/5/95- CORRECTED OVERALL LENGTH DIMENSION

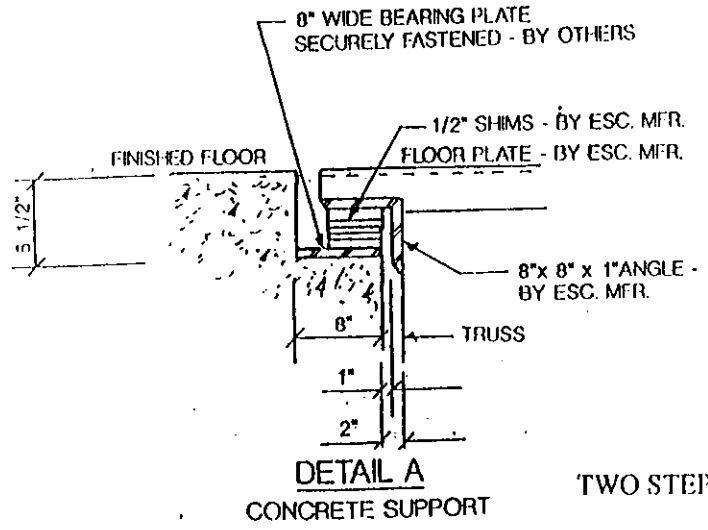
15A  
10



**WELLWAY PLAN**

| ESC No. | REACTIONS - IN KIPS |      |      |
|---------|---------------------|------|------|
|         | Rl                  | Ri   | Ru   |
| 10      | 10.5                | 37.1 | 28.0 |
| 11      | 21.3                | ---  | 22.4 |
| 12      | 9.0                 | 32.1 | 24.3 |

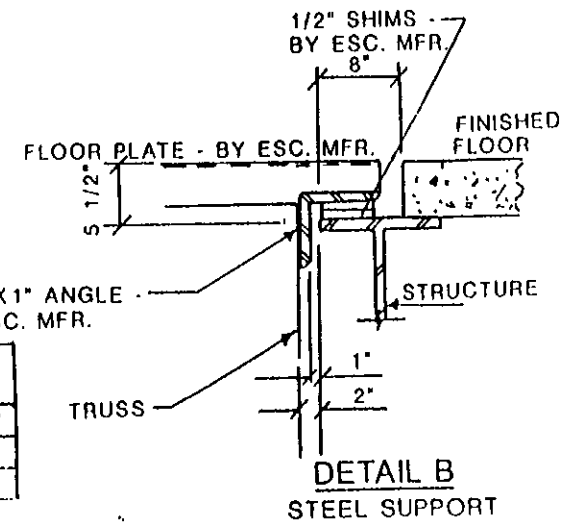
ESCALATOR No. 10 SERVE MEETING ROOM TO BALLROOM LEVEL  
 ESCALATOR No. 11 SERVE PARKING TO MEETING ROOM LEVEL  
 ESCALATOR No. 12 SERVE INTERMEDIATE TO PARKING LEVEL



**DETAIL A**  
CONCRETE SUPPORT

TWO STEP ARRANGEMENT

| ESC. No. | RISE       | B          | C          |
|----------|------------|------------|------------|
|          | A          |            |            |
| 10       | 23'-0"     | 39'-10"    | 59'-0 1/8" |
| 11       | 13'-4 7/8" | 23'-2 5/8" | 42'-4 3/4" |
| 12       | 17'-6"     | 30'-3 3/4" | 49'-5 7/8" |



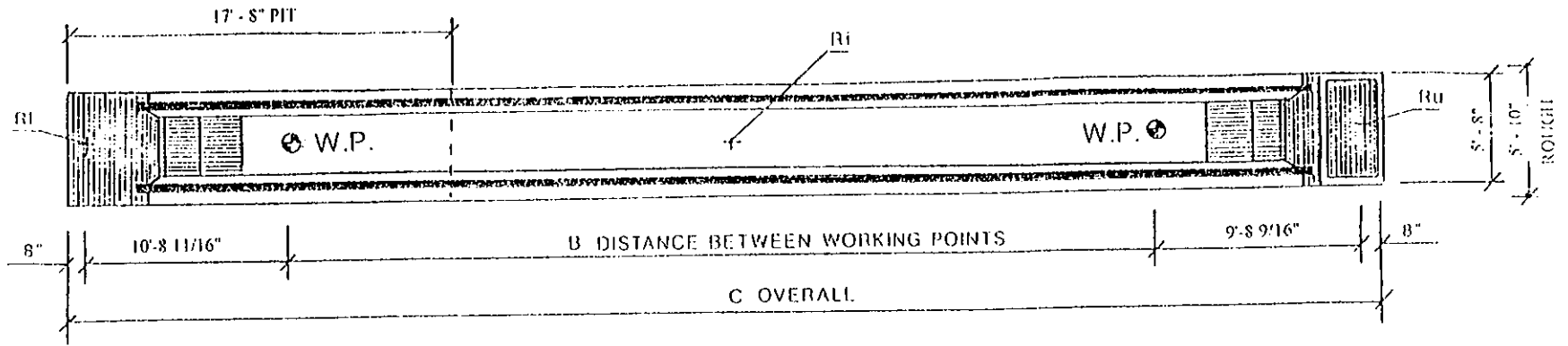
**DETAIL B**  
STEEL SUPPORT

ESCALATORS No. 10 TO 12 = 48" WIDE @ 100 FPM **Syska & Hennessy**  
 , San Francisco, CA

|  |  |                         |      |      |        |          |            |
|--|--|-------------------------|------|------|--------|----------|------------|
| Project                                  |  | TRANSPORT SYSTEMS GROUP |      |      |        |          |            |
| HAWAII CONVENTION CENTER<br>HONOLULU, HI |  | PM                      | HVAC | ELEC | Date   | Drawn by | Drawing no |
| Title                                    |  | PLMB                    | SPR  | ELEV | 4/5/95 | RJB      | 16         |
| WELLWAY PLAN                             |  |                         |      | ★    | Scale  | N.T.S.   | REV. D     |

REV. 5/24/95 BLDG REDESIGN & RENUMBERED REV. B: 5/25/95- REVISED WIDTH, ADDED ROUGH OPENING REV. C: 6/5/95- CORRECTED OVERALL LENGTH DIMENSION  
 REV. 7/31/95- DELETED NO. 13; NO. 11 & 12-RISE REVISED ADJUSTED DIMENSIONS ACCORDINGLY

10/16

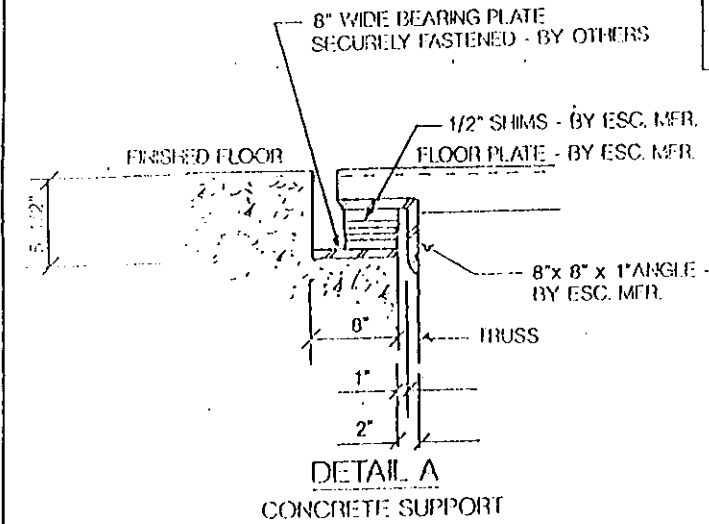
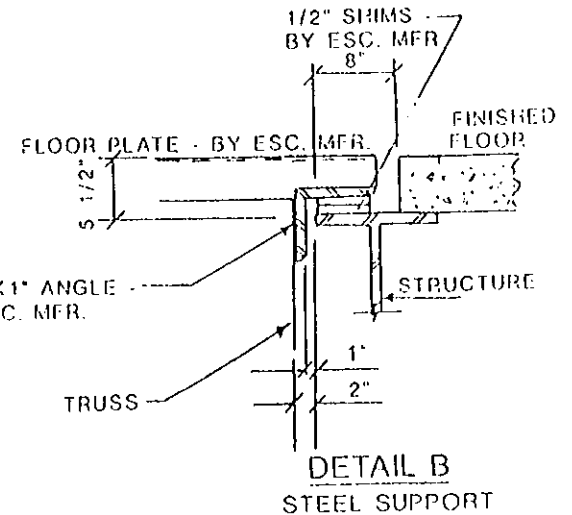


WELLWAY PLAN

ESCALATOR No. 10 SERVE MEETING ROOM TO BALLROOM LEVEL  
 ESCALATOR No. 11 SERVE PARKING TO MEETING ROOM LEVEL  
 ESCALATOR No. 12 SERVE INTERMEDIATE TO PARKING LEVEL

| ESC No | REACTIONS - IN KIPS |      |       |
|--------|---------------------|------|-------|
|        | Ri                  | Rj   | Ru    |
| 10     | 10.8                | 38.3 | 28.9  |
| 11     | 21.8                | ---  | 22.95 |
| 12     | 9.3                 | 33.1 | 25.0  |

| ESC No | RISE       | B          | C           |
|--------|------------|------------|-------------|
|        | A          |            |             |
| 10     | 23'-6"     | 39'-10"    | 61'-7 1/4"  |
| 11     | 12'-4 7/8" | 23'-2 5/8" | 44'-11 7/8" |
| 12     | 17'-6"     | 30'-3 3/4" | 52'-1"      |

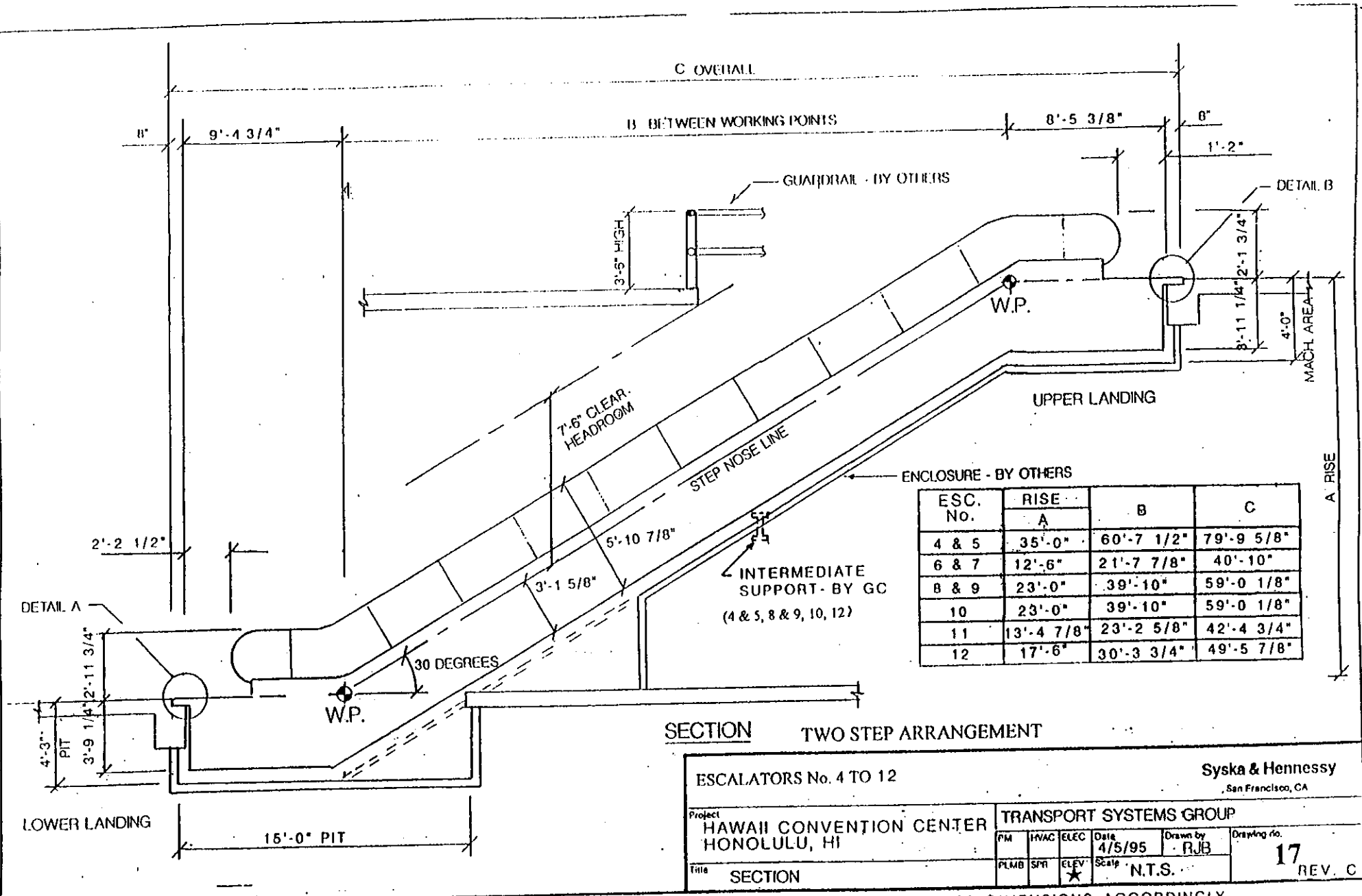


THREE STEP ARRANGEMENT

|   |      |                                       |                 |
|---|------|---------------------------------------|-----------------|
| ESCALATORS No. 10 & 12 - 48" WIDE @ 100 FPM         |      | Syska & Hennessy<br>San Francisco, CA |                 |
| Project<br>HAWAII CONVENTION CENTER<br>HONOLULU, HI |      | TRANSPORT SYSTEMS GROUP               |                 |
| PM  | HVAC | ELEC                                  | Date<br>5/24/95 |
| PL/BS   | SPR  | ELEV                                  | Scale<br>N.T.S. |
| Title<br>WELLWAY PLAN                               |      | Drawing no<br>16A<br>REV. D           |                 |

REV. A: 5/25/95 - REVISED WIDTH, ADDED ROUGH OPENING REV. B: 6/5/95 - CORRECTED OVERALL LENGTH DIMENSION REV. C: 7/31/95 - ADDED ESC. NO. 12  
 REV. D: 8/17/95 - REVISED ESC. No. 10 O.A. LENGTH

16/10



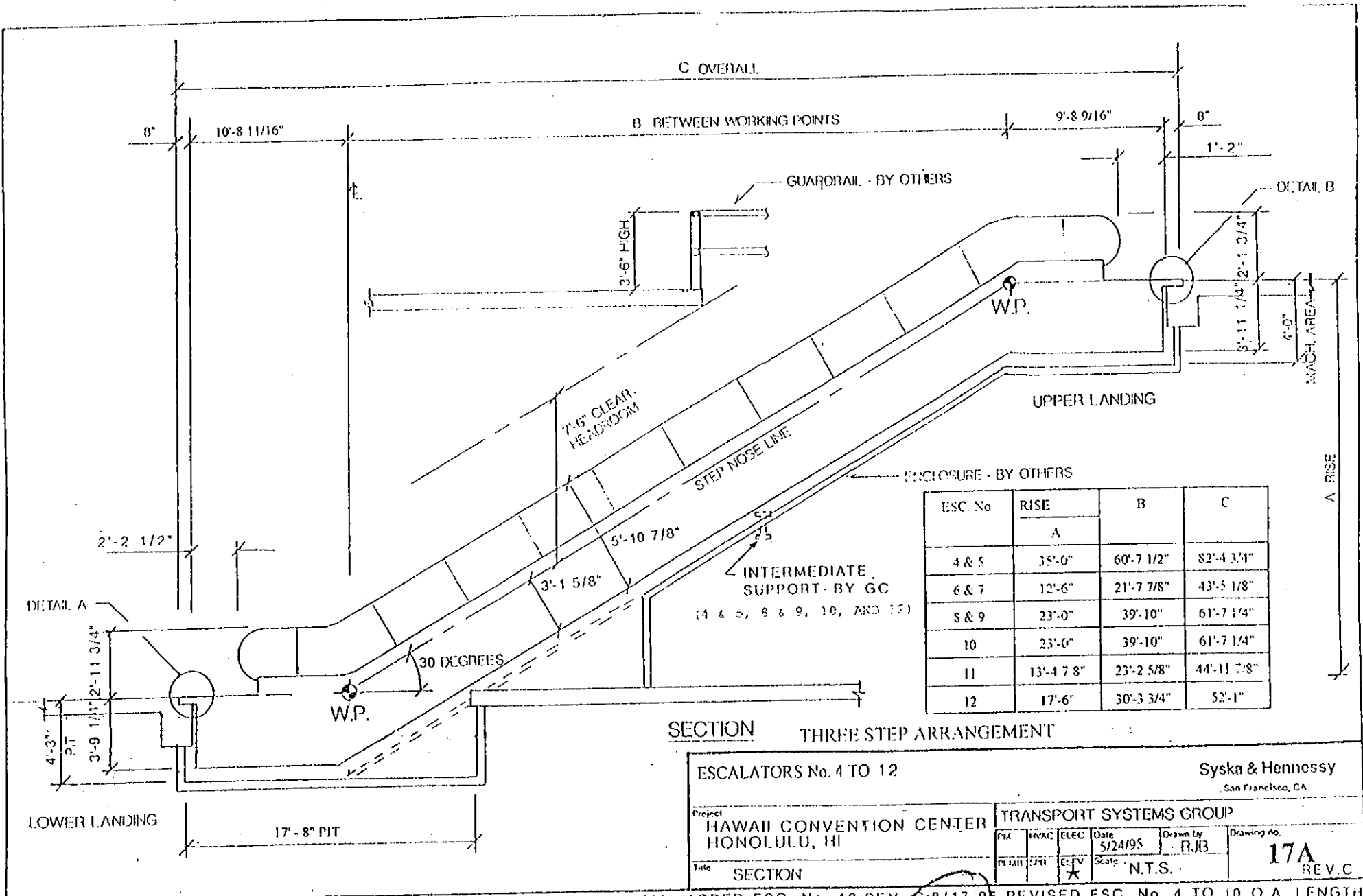
| ESC. No. | RISE       | B          | C          |
|----------|------------|------------|------------|
|          | A          |            |            |
| 4 & 5    | 35'-0"     | 60'-7 1/2" | 79'-9 5/8" |
| 6 & 7    | 12'-6"     | 21'-7 7/8" | 40'-10"    |
| 8 & 9    | 23'-0"     | 39'-10"    | 59'-0 1/8" |
| 10       | 23'-0"     | 39'-10"    | 59'-0 1/8" |
| 11       | 13'-4 7/8" | 23'-2 5/8" | 42'-4 3/4" |
| 12       | 17'-6"     | 30'-3 3/4" | 49'-5 7/8" |

**SECTION TWO STEP ARRANGEMENT**

|   |      |                         |                   |                                       |             |
|---|------|-------------------------|-------------------|---------------------------------------|-------------|
| ESCALATORS No. 4 TO 12                              |      |                         |                   | Syska & Hennessy<br>San Francisco, CA |             |
| Project<br>HAWAII CONVENTION CENTER<br>HONOLULU, HI |      | TRANSPORT SYSTEMS GROUP |                   |                                       |             |
| PM  | HWAC | ELEC                    | Date<br>4/5/95    | Drawn by<br>RJB                       | Drawing No. |
| PLMB  | SFR  | ELEV                    | Scale<br>★ N.T.S. | <b>17</b><br>REV. C                   |             |
| Title<br>SECTION                                    |      |                         |                   |                                       |             |

REV. A: 5/24/95 BLDG REDESIGN & RENUMBERED    REV. C: 7/31/95 DELETED NO. 13, NO. 11 & 12-RISE REVISED ADJUSTED DIMENSIONS ACCORDINGLY

0/1



ESCALATORS No. 4 TO 12  
 Syska & Hennessy  
 San Francisco, CA

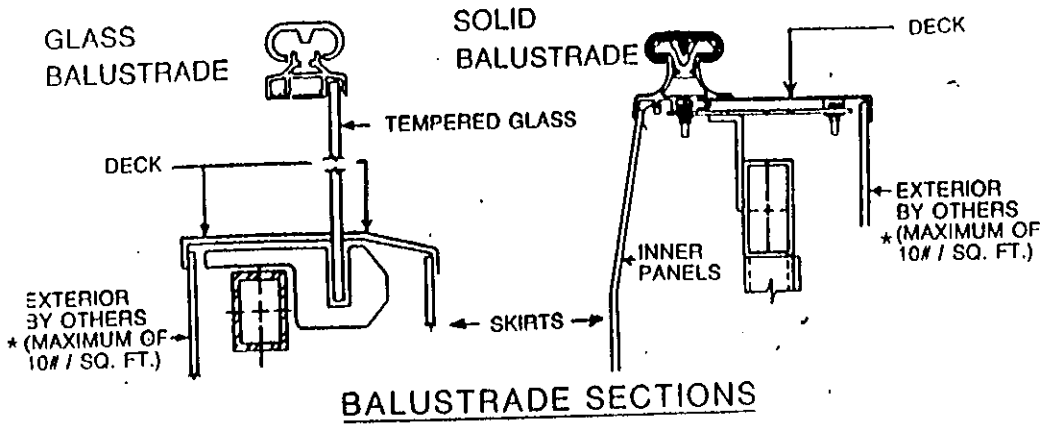
Project: HAWAII CONVENTION CENTER HONOLULU, HI  
 TRANSPORT SYSTEMS GROUP  
 Date: 5/24/95  
 Drawn by: RJB  
 Title: SECTION  
 Scale: N.T.S.

Drawing no. 17A  
 REV. C

REV. A: 6/5/95 - CORRECTED OVERALL LENGTH DIMENSION  
 REV. B: 7/31/95 - ADDED ESC. No. 12  
 REV. C: 8/17/95 - REVISED ESC. No. 4 TO 10 O.A. LENGTH

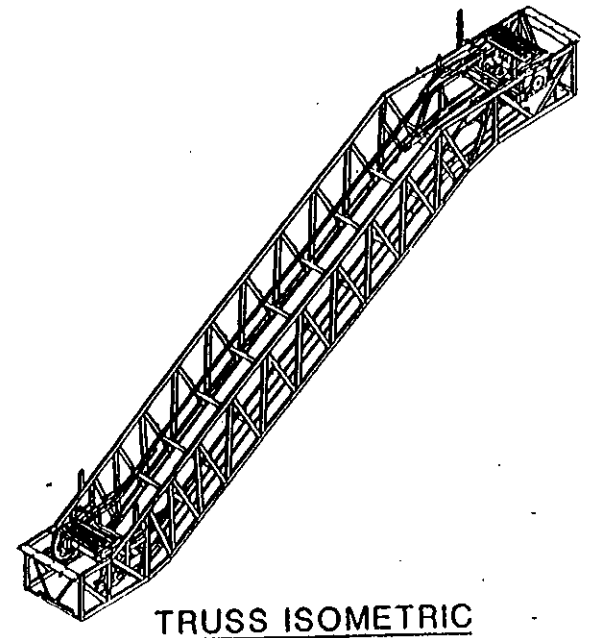
17A/10



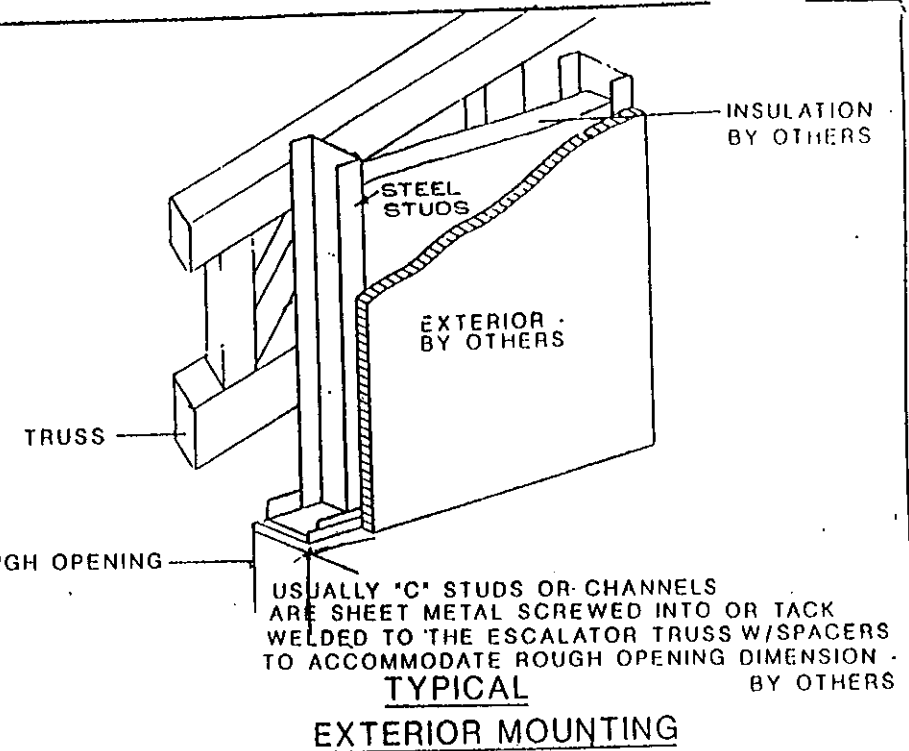


**BALUSTRADE SECTIONS**

\* IF ENCLOSURE IS HEAVIER THAN 10LBS/FT. ESCALATOR MFR. MUST REVIEW.



**TRUSS ISOMETRIC**



**TYPICAL EXTERIOR MOUNTING**

Syska & Hennessy  
San Francisco, CA

|                            |      |                                       |         |          |             |                         |  |  |  |
|----------------------------|------|---------------------------------------|---------|----------|-------------|-------------------------|--|--|--|
| Project                    |      | HAWAII CONVENTION CENTER HONOLULU, HI |         |          |             | TRANSPORT SYSTEMS GROUP |  |  |  |
| PM                         | MVAC | ELEC                                  | Date    | Drawn by | Drawing no. |                         |  |  |  |
|                            |      |                                       | 5/31/95 | RJB      | 18          |                         |  |  |  |
| Title                      | PLMB | SPR                                   | ELEV    | Scale    |             |                         |  |  |  |
| ESCALATOR EXTERIOR DETAILS |      |                                       | ★       | N.T.S.   |             |                         |  |  |  |

1/8