

LEGEND - UNDERGROUND (PLOT PLAN)

EXISTING	PROPOSED	DESCRIPTION
PP	PP	DUCTLINE, PRIMARY, SIZE/AMOUNT AS INDICATED
3x5	3x5	HANDHOLE, SIZE AS INDICATED
	A	DETAIL, DUCT, NUMBER/SIZE AS INDICATED
	→	STUBOUT, DUCT WITH CAP
○	○	MANHOLE, SIZE AS INDICATED

NOTE:
 CONTACT HAWAII CONVENTION CENTER AUTHORITY,
 LYNN W. THOMPSON, GEN. MANAGER, SPECTACOR
 MANAGEMENT GROUP SMG, PH 944-8833
 FOR FUTURE MAINTENANCE OF HECO FACILITIES.

RELATED DRAWINGS

DWG NO.	DESCRIPTION
32744 (SHT 1)	SITE PLAN - GENERAL LAYOUT
32746 (SHT 3)	TRANSFORMER VAULT - VAULT ROOM #157
32747 (SHT 4)	TRANSFORMER VAULT - VAULT ROOM #284
32748 (SHT 5)	TRANSFORMER VAULT - VAULT ROOM #229 & #235
32749 (SHT 6)	TRANSFORMER VAULT - VAULT ROOM #229 & #235
32750 (SHT 7)	TRANSFORMER VAULT - VAULT ROOM #229 & #235
32751 (SHT 8)	TRANSFORMER VAULT - VAULT ROOM #243
32752 (SHT 9)	ELECTRICAL ONE LINE DIAGRAM

PROJECT NO. P204013
 3-PHASE 4W 277/480V U.G. SERVICE
 VAULT NOS. 7580, 7580A
 7581, 7581A
 7582, 7582A
 7583, 7583A, 7583B
 7584, 7584A

NO.	DATE	REVISIONS	BY	CHK'D	APP'D
11-25-96		CHANGED MH-170 TO MH-498-1 RE-ROUTED DUCTLINE & CHANGED DUCTLINE DETAIL REQUIREMENTS, BY CUSTOMER	GY	SB	
5-01-96		REVISED MH-498 & MH-498A LOCATION & DUCTLINE REQUIREMENTS, BY CUSTOMER	SB	SB	
3-5-96		REVISED MH/MH & DUCTLINE REQUIREMENTS, KAHAKAI DR. & KAKAIA AVE.	SB	SB	

**HAWAII CONVENTION CENTER
 KAPIOLANI BOULEVARD**

ELECTRICAL SITE PLAN

DESIGNED S. BATULA DRAWN MSHH DATE 1-15-96 SCALE AS NOTED

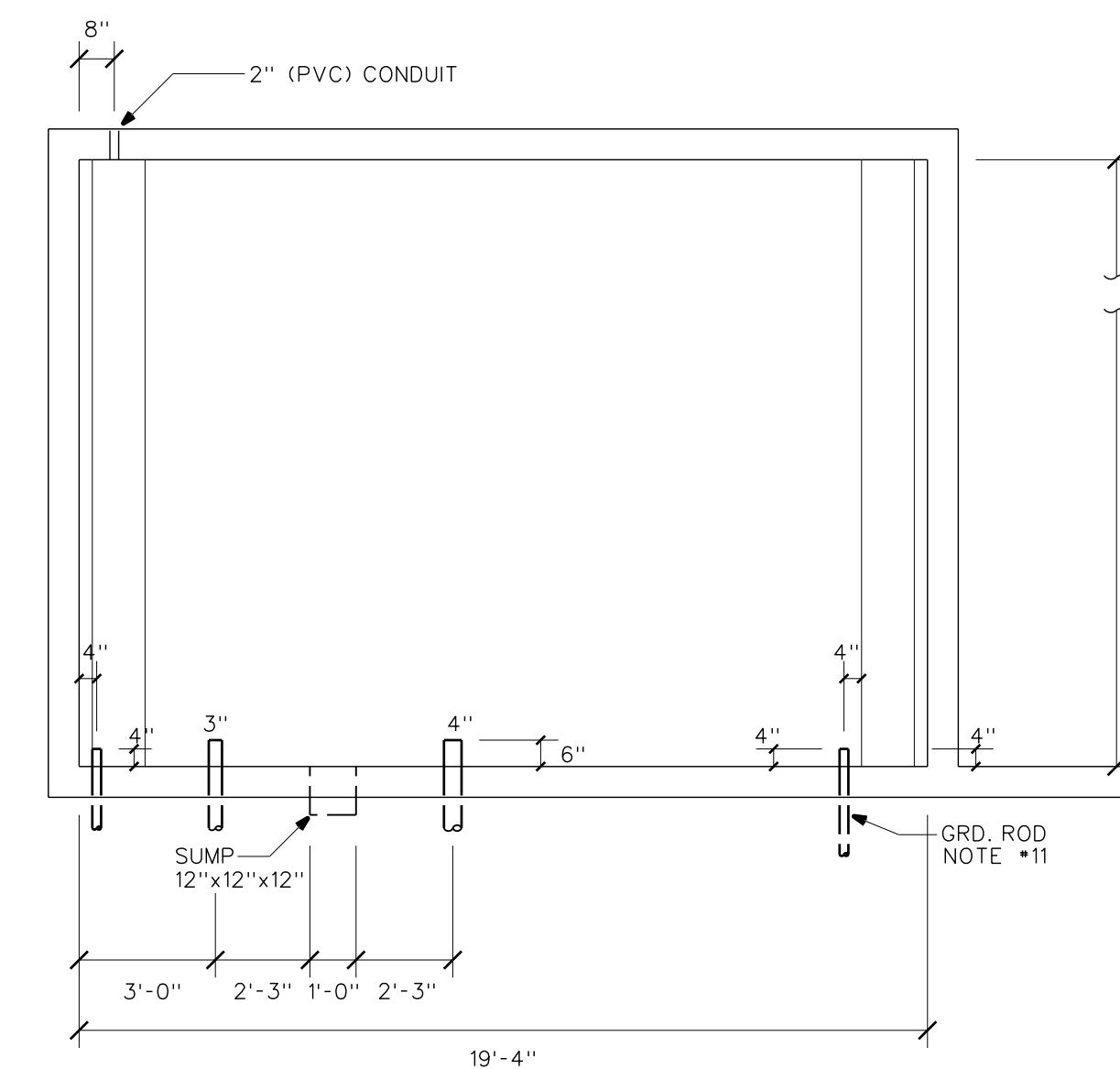
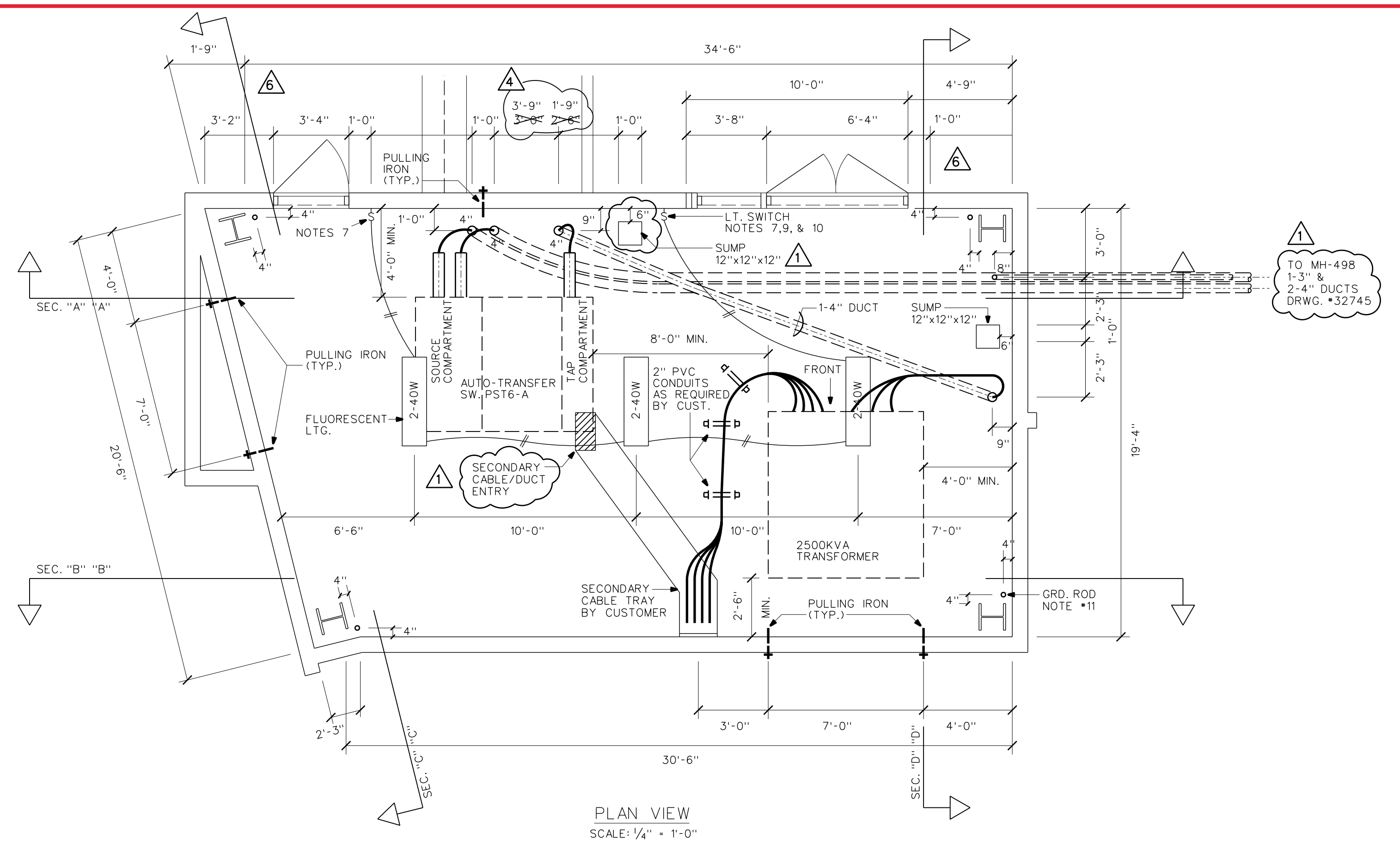
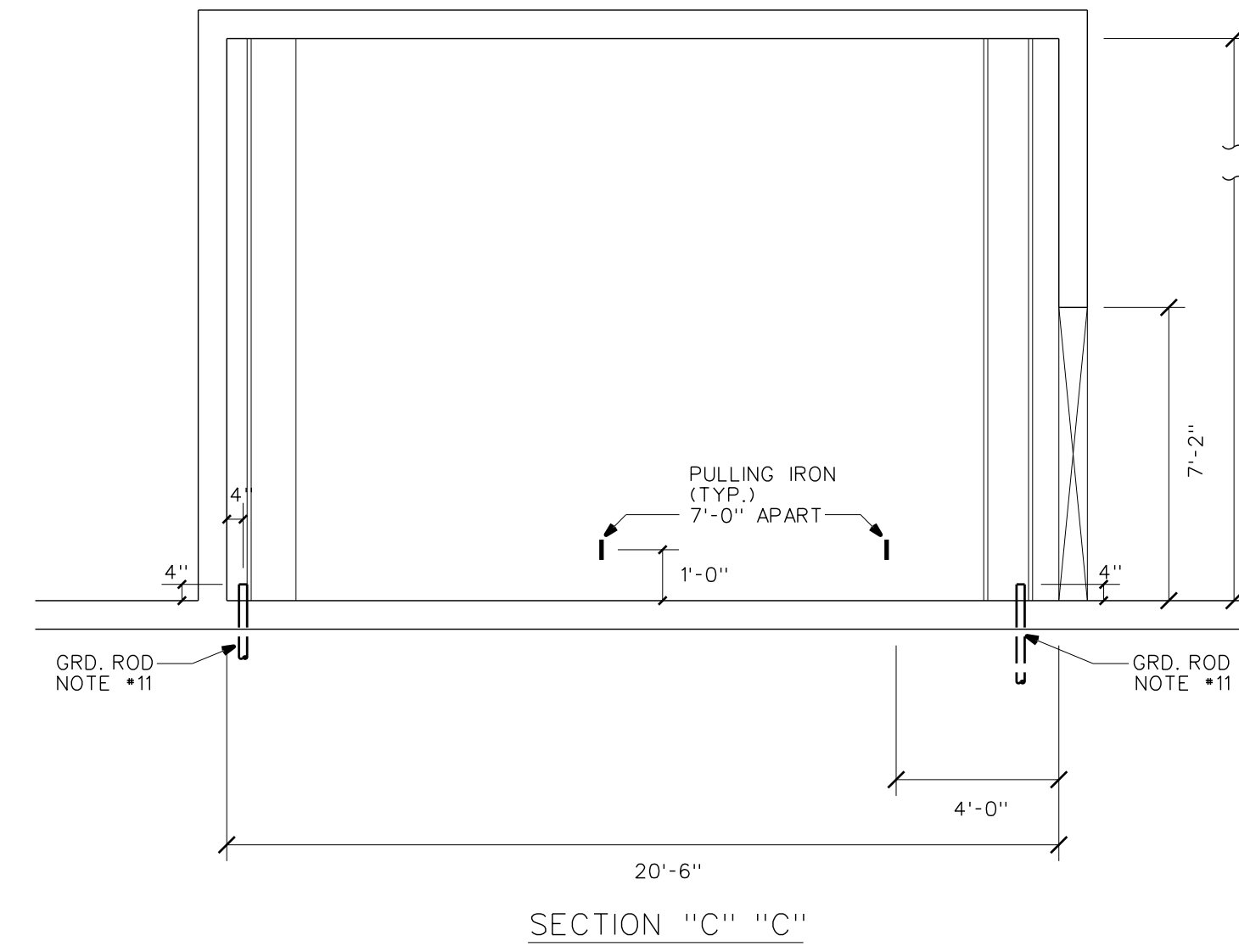
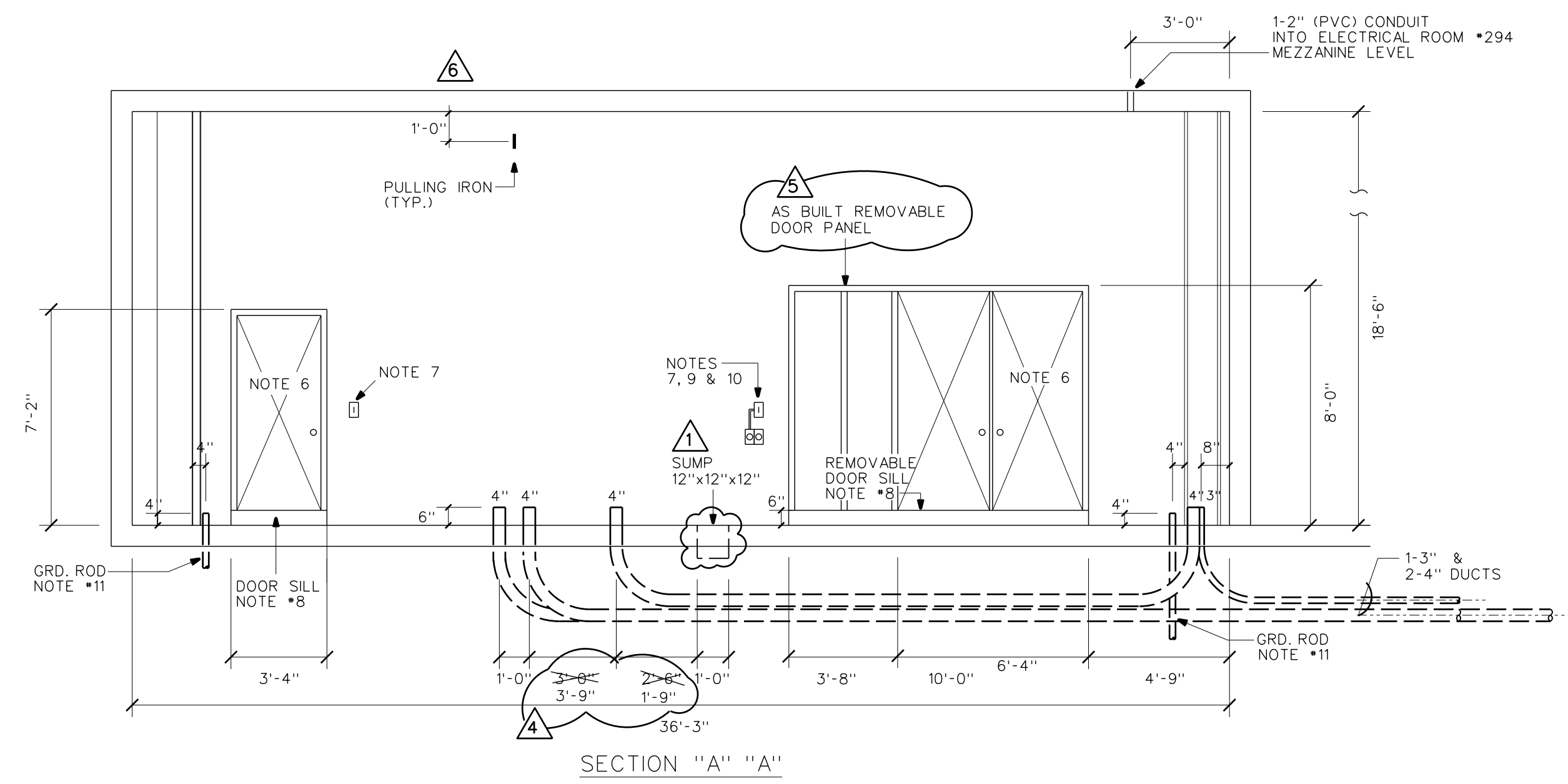
CHECKED ELEC. MECH. STRUC. SD CUSTOMER INSTALLATION DEPARTMENT

APPROVAL
[Signature] 1/15/96
[Signature] 1/16/96

HONOLULU, HAWAII
 HAWAIIAN ELECTRIC CO., INC.
 DRAWING NUMBER **32745** REV **6**

ELECTRICAL SITE PLAN
 SCALE: 1/8" = 1'-0"
 TMK: 2-3-35-01

SCANNED DEC 7 8 2005
 THIS DWG MAY NOT REFLECT THE LATEST CHANGES



**VAULT ROOM •157
GROUND LEVEL**

NOTES:

1. A WARNING SIGN (HIGH VOLTAGE) SHALL BE DISPLAYED AT ALL VAULT ENTRANCES.
2. CONTACT HAWAII CONVENTION CENTER AUTHORITY, LYNN W. THOMPSON, GEN. MANAGER, SPECTACOR MANAGEMENT GROUP, PH 944-8833 FOR FUTURE MAINTENANCE OF HECO FACILITIES.
3. ALL PADMOUNTED SWITCHGEAR (PST6-A) SHALL BE EQUIPPED WITH A 18" BASE SPACER, NON COMPARTMENTED.
4. ALL CONDUITS WITHIN VAULT ARE 4" PVC CONDUITS SCHEDULE 40 TO BE FURNISHED & INSTALLED BY HECO, SUBSTATION DIVISION, UNLESS NOTED OTHERWISE.
5. FOR UTILITY COMPANY MAINTENANCE OF HECO'S FACILITY, REFER TO NOTE #2, DRWG. #32744

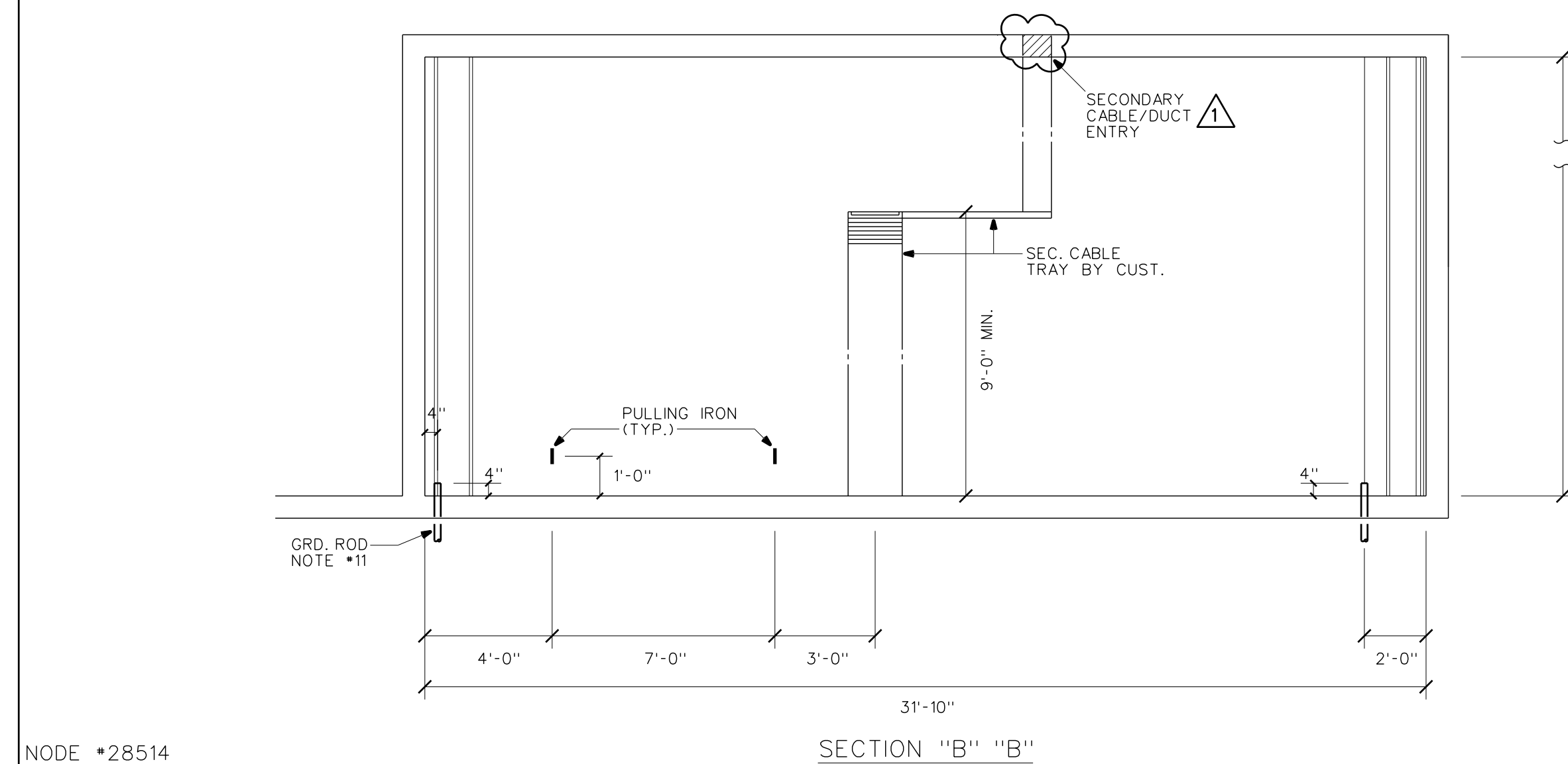
REFERENCE DRAWINGS

DWG. NO.	DESCRIPTION
21-1060	IDENTIFICATION OF UNDERGROUND CABLES
23-8011	3Ø DEADFRONT PADMOUNTED TRANSFORMER
24-1012	MULTIPLE SECONDARY CABLE CONNECTION
26-6030	TERMINATION 1/C PEICN 25KV CABLE LB ELBOW
26-8032	LB ELBOW APPLICATION

RELATED DRAWINGS

DWG. NO.	DESCRIPTION
32744	SITE PLAN - GENERAL LAYOUT
32745	ELECTRICAL SITE PLAN
32747	TRANSFORMER VAULT - VAULT ROOM #284
32748	TRANSFORMER VAULT - VAULT ROOMS #229 & #235
32749	TRANSFORMER VAULT - VAULT ROOMS #229 & #235
32750	SWITCHING VAULT - VAULT ROOM #235
32751	TRANSFORMER VAULT - VAULT ROOM #243
32752	ELECTRICAL ONE LINE DIAGRAM

PROJECT NO. P204013
3-PHASE 4W 277/480V U.G. SERVICE
VAULT NOS. 7580, 7580A



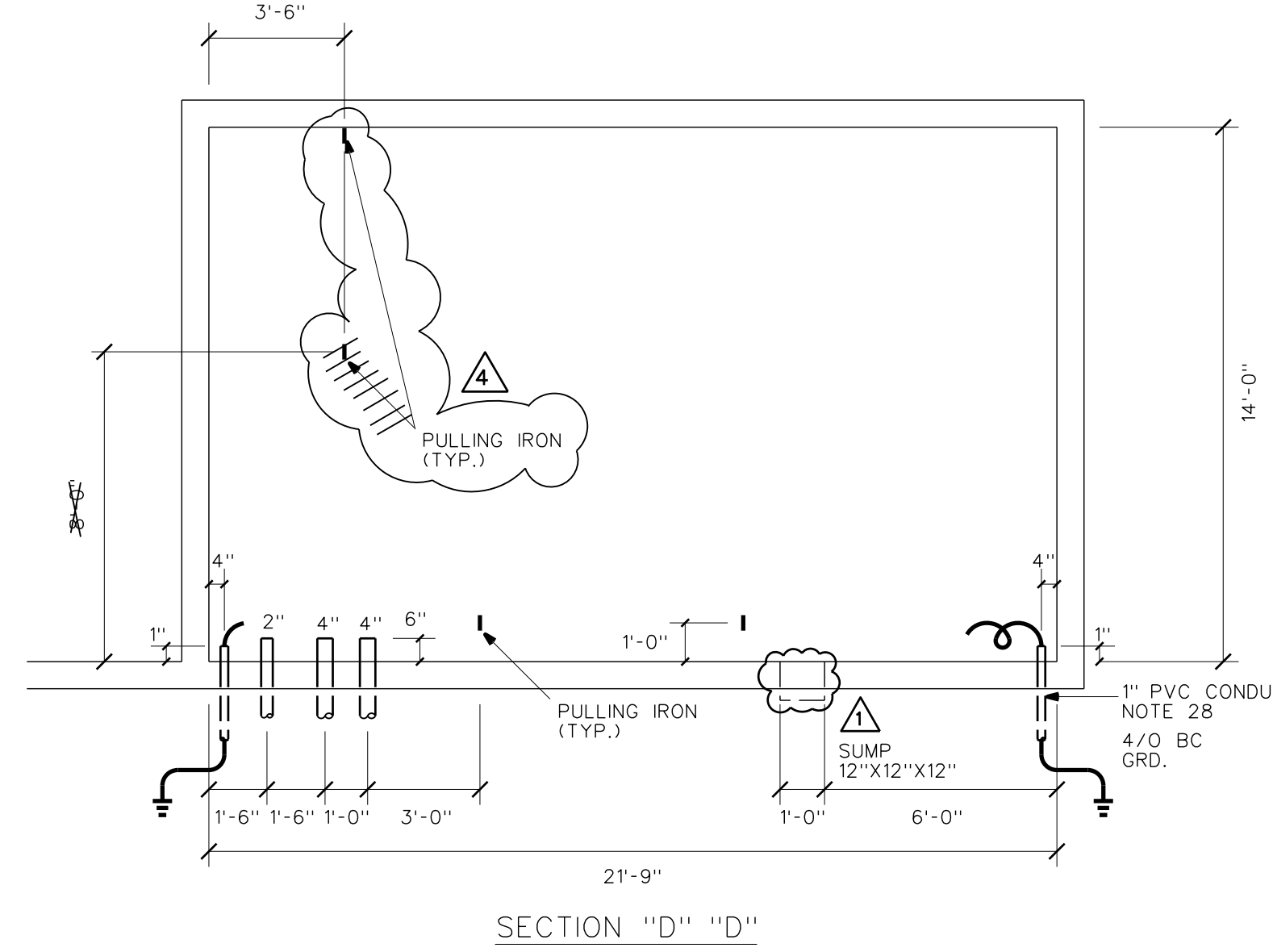
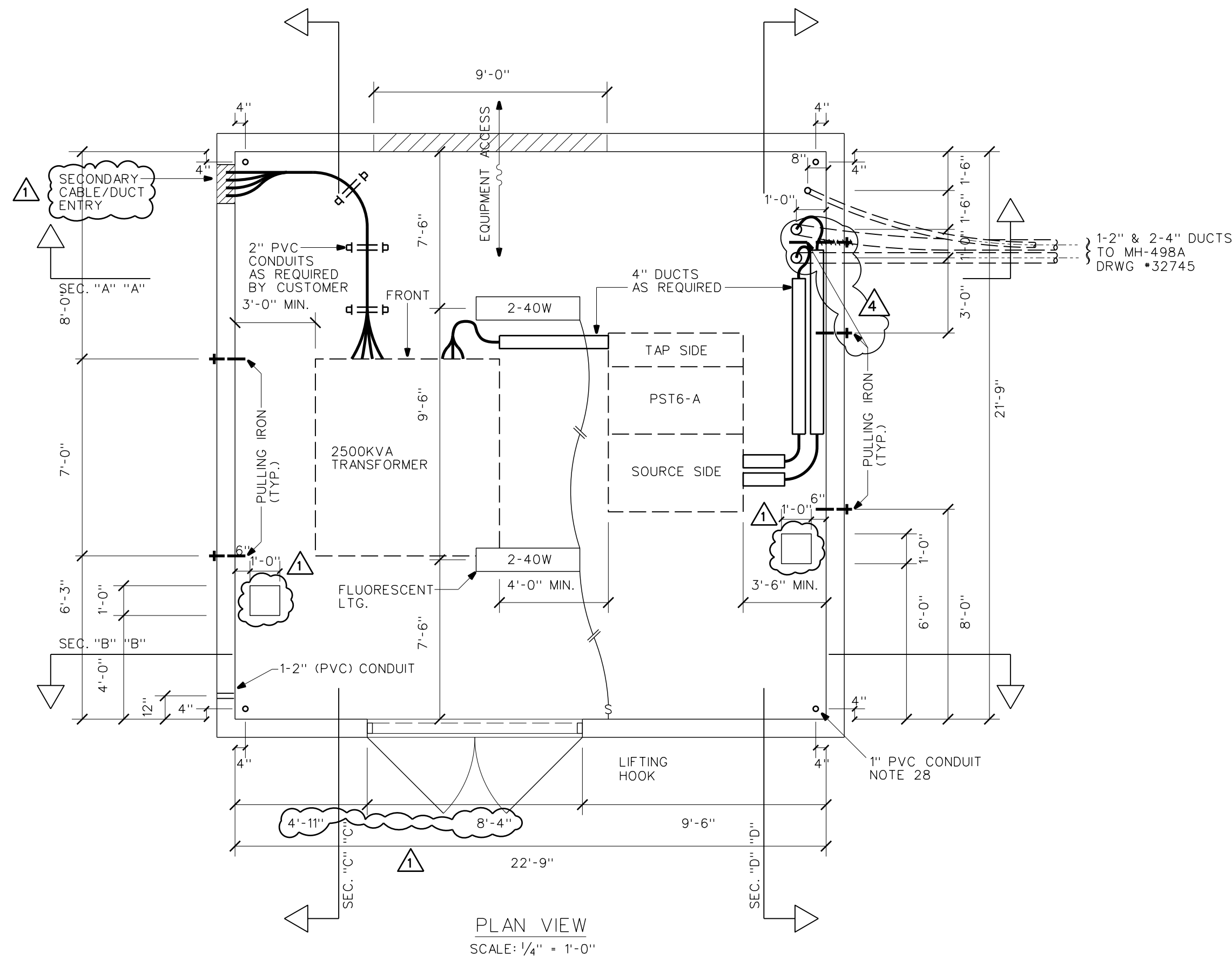
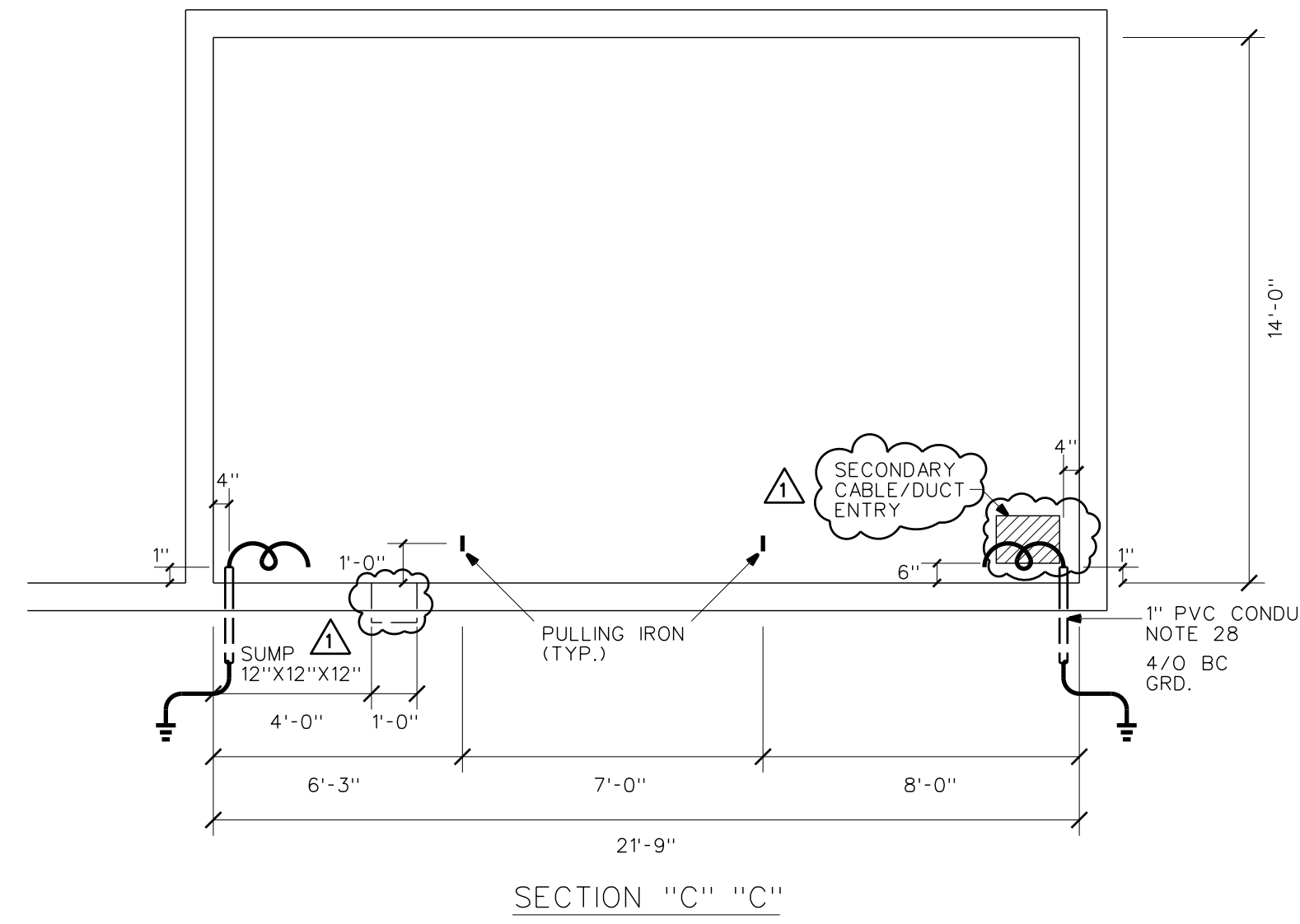
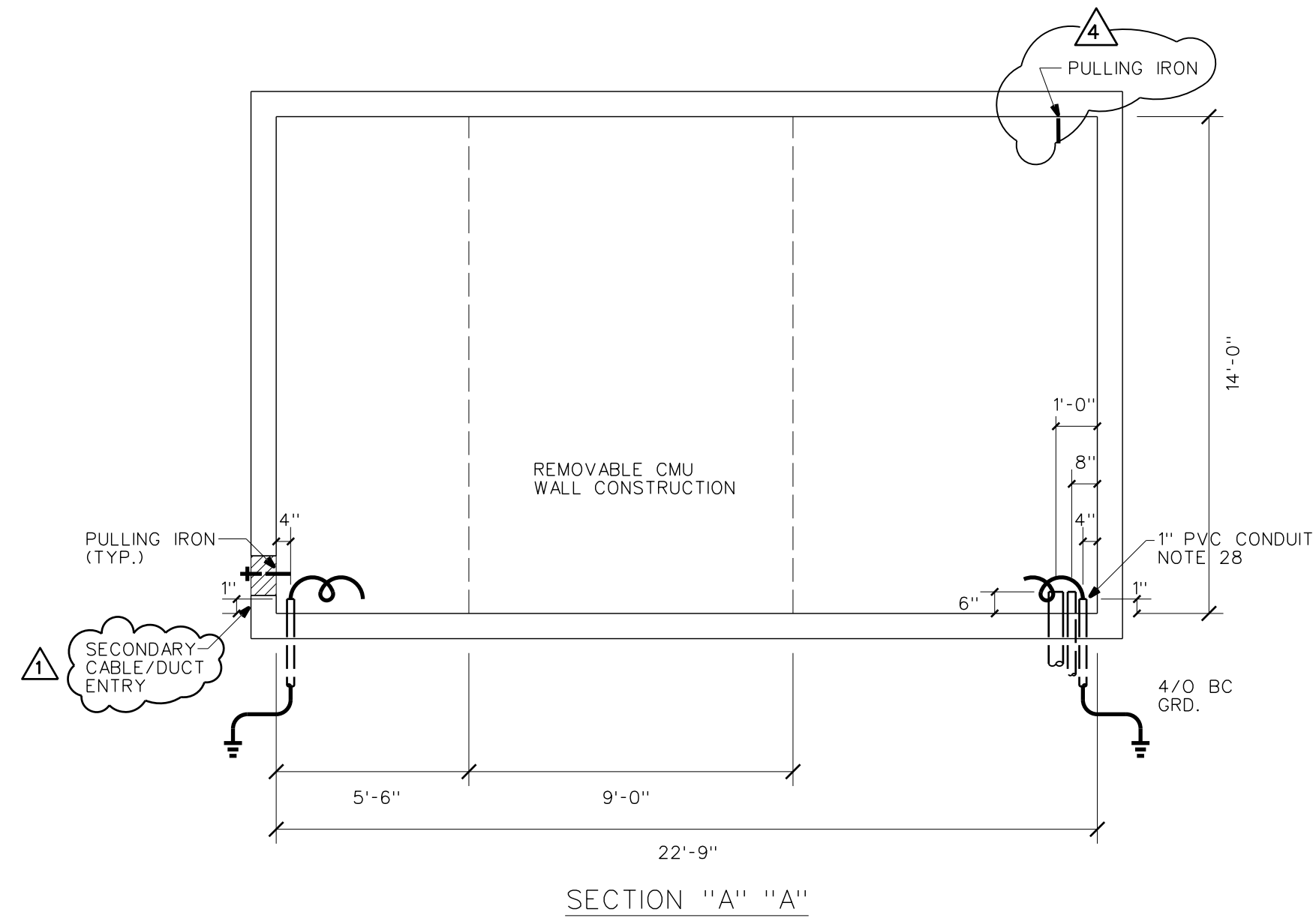
NOTE #28514
#28515

NO.	DATE	REVISIONS	BY	CHK'D	APP'D
5	01-31-97	AS BUILT DOOR/DOOR PANEL	MSHH	AC	SB
4	11-04-96	REVISED DUCT LOCATION DUE TO PILE CAP	GY	SB	SB
3	3-5-96	ADDED SEC. DUCT/ENTRY & SEC. CABLE TRAY, DUCTS & PUMP SUMP	SB	SB	SB

**HAWAII CONVENTION CENTER
KAPIOLANI BOULEVARD**

3Ø D.F. PADMT TRANSFORMER VAULT

DESIGNED: BATULA	DRAWN: MSHH	DATE: 1-15-96	SCALE: AS NOTED
CHECKED: ELEC. MECH. STRUC. SB	CUSTOMER INSTALLATION DEPARTMENT HAWAIIAN ELECTRIC CO., INC. HONOLULU, HAWAII		
APPROVAL: <i>Jerry Vaughan</i> <i>Ed [Signature]</i>	DATE: 1/15/96 1/16/96	DRAWING NUMBER: 32746	REV: 6



**VAULT ROOM #284
MEZZANINE LEVEL**

NOTES:

1. A WARNING SIGN (HIGH VOLTAGE) SHALL BE DISPLAYED AT ALL VAULT ENTRANCES.
2. CONTACT HAWAII CONVENTION CENTER AUTHORITY, LYNN W. THOMPSON, GEN. MANAGER, SPECTACOR MANAGEMENT GROUP, PH 944-8833 FOR FUTURE MAINTENANCE OF HECO FACILITIES.
3. ALL PADMOUNTED SWITCHGEAR (PST6-A) SHALL BE EQUIPPED WITH A 18" BASE SPACER, NON COMPARTMENTED.
4. ALL CONDUITS WITHIN VAULT ARE 4" PVC CONDUITS SCHEDULE 40 TO BE FURNISHED & INSTALLED BY HECO, SUBSTATION DIVISION, UNLESS NOTED OTHERWISE.

REFERENCE DRAWINGS

DWG. NO.
21-1060
23-8011
24-1012
26-6030
26-8032

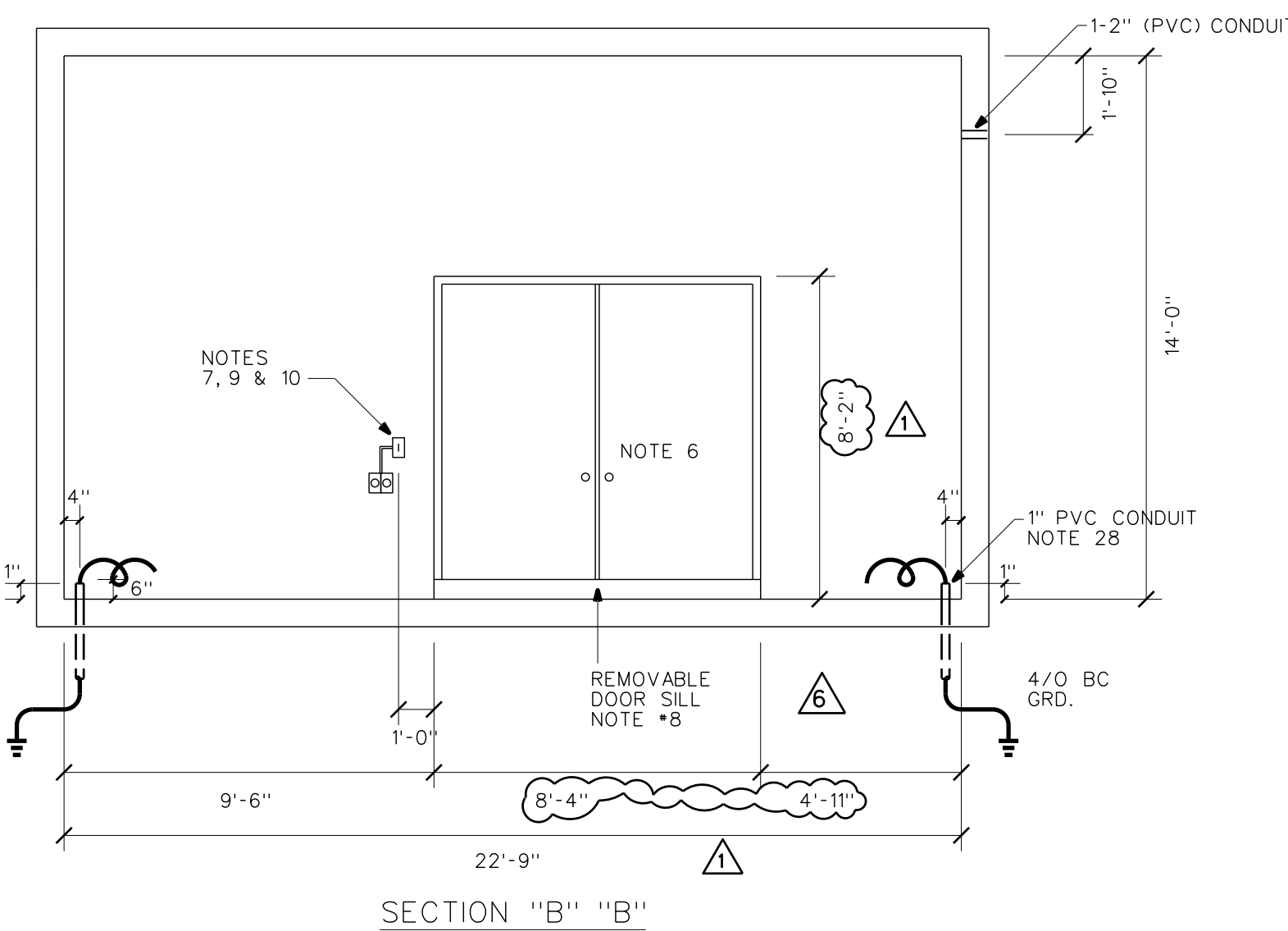
DESCRIPTION
IDENTIFICATION OF UNDERGROUND CABLES
3Ø DEADFRONT PADMOUNTED TRANSFORMER
MULTIPLE SECONDARY CABLE CONNECTION
TERMINATION 1/C PEICN 25KV CABLE LB ELBOW
LB ELBOW APPLICATION

RELATED DRAWINGS

DWG. NO.
32744
32745
32746
32748
32749
32750
32751
32752

DESCRIPTION
SITE PLAN - GENERAL LAYOUT
ELECTRICAL SITE PLAN
TRANSFORMER VAULT - VAULT ROOM #157
TRANSFORMER VAULT - VAULT ROOMS #229 & #235
TRANSFORMER VAULT - VAULT ROOMS #229 & #235
SWITCHING VAULT - VAULT ROOM #235
TRANSFORMER VAULT - VAULT ROOM #243
ELECTRICAL ONE LINE DIAGRAM

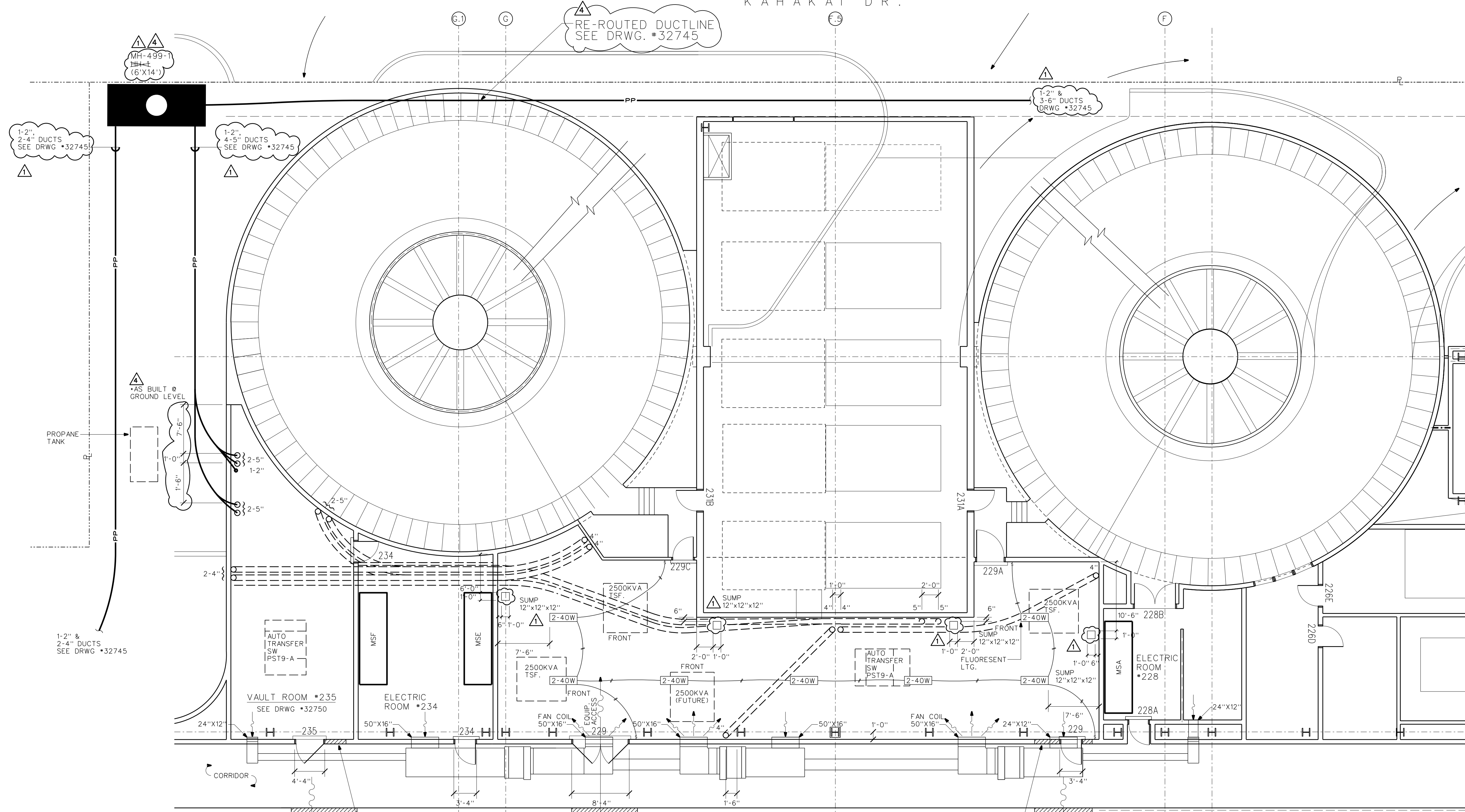
PROJECT NO. P204013
3-PHASE 4W 277/480V U.G. SERVICE
VAULT NOS. 7581, 7581A



NODE #28516
#28517

11-25-96	RELOCATED PULLING IRON, BY CUSTOMER	GY	SB	
3-6-96	CHANGED DOOR SIZE & ADDED PUMP SUMPS, SECONDARY CABLE/DUCT ENTRY LOCATION	SB	SB	
NO.	DATE	REVISIONS	BY	CHK'D APP'D
HAWAII CONVENTION CENTER KAPIOLANI BOULEVARD				
3Ø D.F. PADMT TRANSFORMER VAULT				
DESIGNED	BATULA	DRAWN	MSHH	DATE 1-15-96 SCALE AS NOTED
CHECKED	ELEC. MECH. STRUC.	CUSTOMER INSTALLATION DEPARTMENT		
APPROVAL				HAWAIIAN ELECTRIC CO., INC.
 1/15/96 1/16/96				HONOLULU, HAWAII
DRAWING NUMBER				REV
32747				6

KAHAKAI DR.



PLAN VIEW
SCALE: 1/8" = 1'-0"

**VAULT ROOM #229
MEZZANINE LEVEL**

- NOTES:
1. A WARNING SIGN (HIGH VOLTAGE) SHALL BE DISPLAYED AT ALL VAULT ENTRANCES.
 2. CONTACT HAWAII CONVENTION CENTER AUTHORITY, LYNN W. THOMPSON, GEN. MANAGER, SPECTACOR MANAGEMENT GROUP, PH 944-8833 FOR FUTURE MAINTENANCE OF HECO FACILITIES.
 3. ALL PADMOUNTED SWITCHGEAR (PST9-A) SHALL BE EQUIPPED WITH A 24" BASE SPACER, NON COMPARTMENTED.
 4. ALL CONDUITS WITHIN VAULT ARE 4" PVC CONDUITS SCHEDULE 40 TO BE FURNISHED & INSTALLED BY HECO, SUBSTATION DIVISION, UNLESS NOTED OTHERWISE.

REFERENCE DRAWINGS

DWG. NO.	DESCRIPTION
21-1060	DESCRIPTION OF UNDERGROUND CABLES
23-8011	3Ø DEADFRONT PADMOUNTED TRANSFORMER IDENTIFICATION
24-1012	MULTIPLE SECONDARY CABLE CONNECTION TERMINATION 1/C PEICN 25KV CABLE LB ELBOW LB ELBOW APPLICATION
26-6030	
26-8032	

RELATED DRAWINGS

DWG. NO.	DESCRIPTION
32744 (SHT 1)	SITE PLAN - GENERAL LAYOUT
32745 (SHT 2)	ELECTRICAL SITE PLAN
32746 (SHT 3)	TRANSFORMER VAULT - VAULT ROOM #157
32747 (SHT 4)	TRANSFORMER VAULT - VAULT ROOM #284
32749 (SHT 6)	TRANSFORMER VAULT - VAULT ROOMS #229 & #235
32750 (SHT 7)	SWITCHING VAULT - VAULT ROOM #235
32751 (SHT 8)	TRANSFORMER VAULT - VAULT ROOM #243
32752 (SHT 9)	ELECTRICAL ONE LINE DIAGRAM

PROJECT NO. P204013
 3-PHASE 4W 277/480V U.G. SERVICE
 VAULT NOS. _____

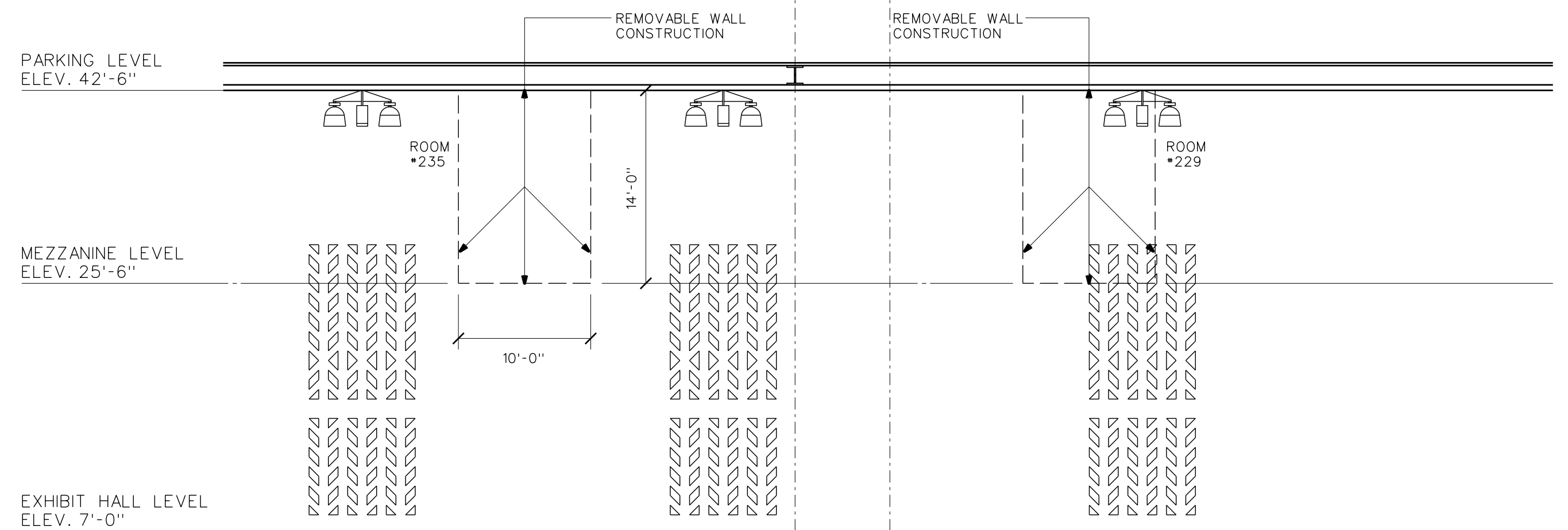


EXHIBIT HALL - WEST
SCALE: 1/8" = 1'-0"

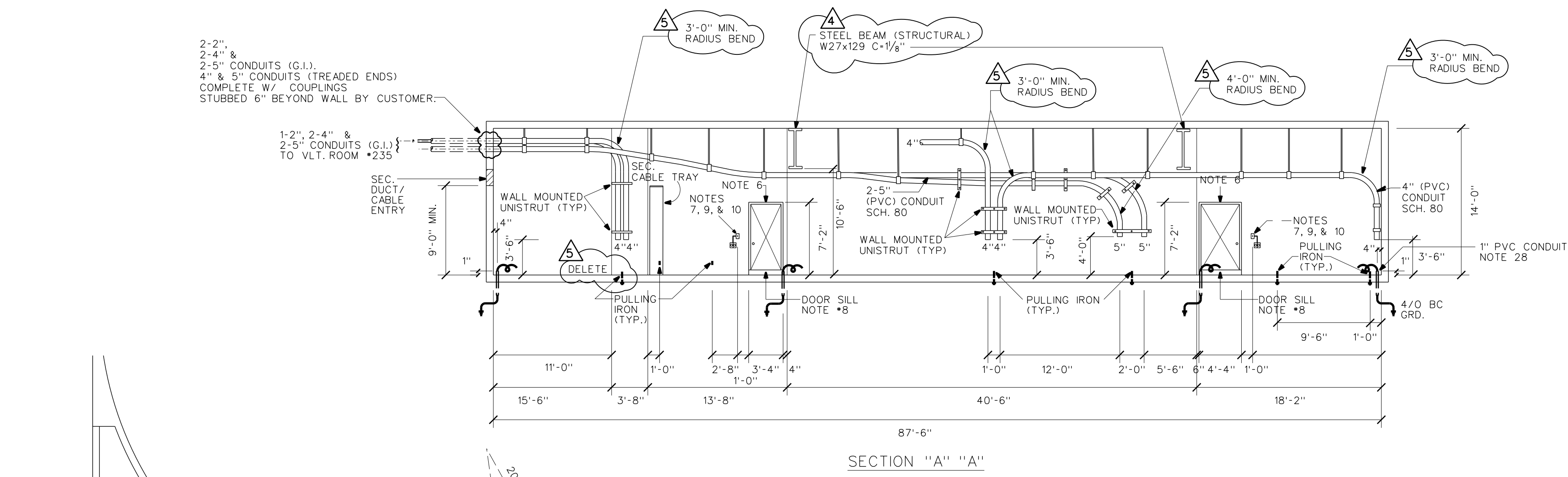
NO.	DATE	REVISIONS	BY	CHK'D	APP'D
5	01-31-97	REVISED CONDUIT REQUIREMENTS	AC	SB	
4	11-25-96	CHANGED HH TO MH (MH-499-1) RE-ROUTED DUCTLINE	GY	SB	
3	3-5-96	ADDED PUMP SUMPS & REVISED DUCTLINE REQUIREMENTS	SB	SB	

**HAWAII CONVENTION CENTER
KAPIOLANI BOULEVARD**

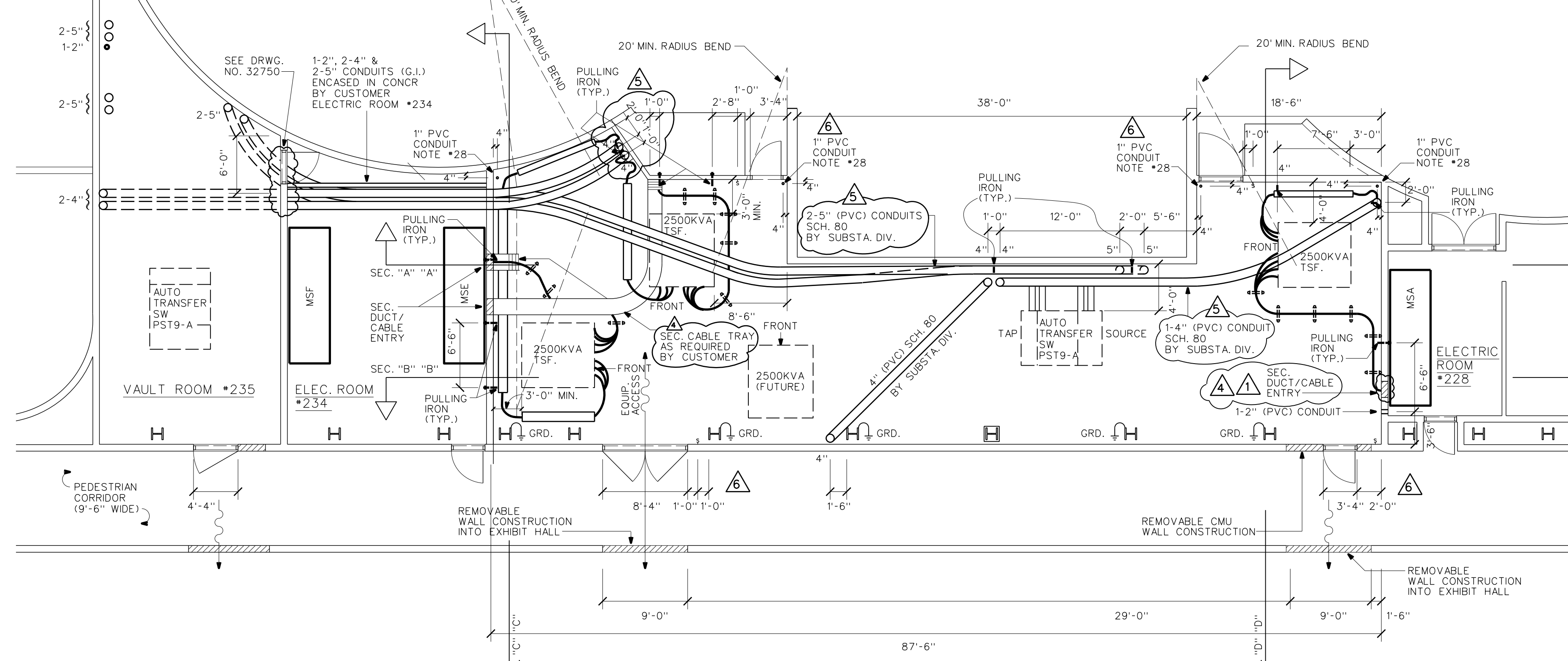
3Ø D.F. PADMT TRANSFORMER VAULT

DESIGNED S. BATULA	DRAWN MSHH	DATE 1-15-96	SCALE AS NOTED
CHECKED ELEC. MECH. STRUC. SB	CUSTOMER INSTALLATION DEPARTMENT HAWAIIAN ELECTRIC CO., INC. HONOLULU, HAWAII		
APPROVAL	1/15/96	DRAWING NUMBER	REV
<i>James Vaughan</i>		32748	6
<i>Ed [Signature]</i>	1/16/96		

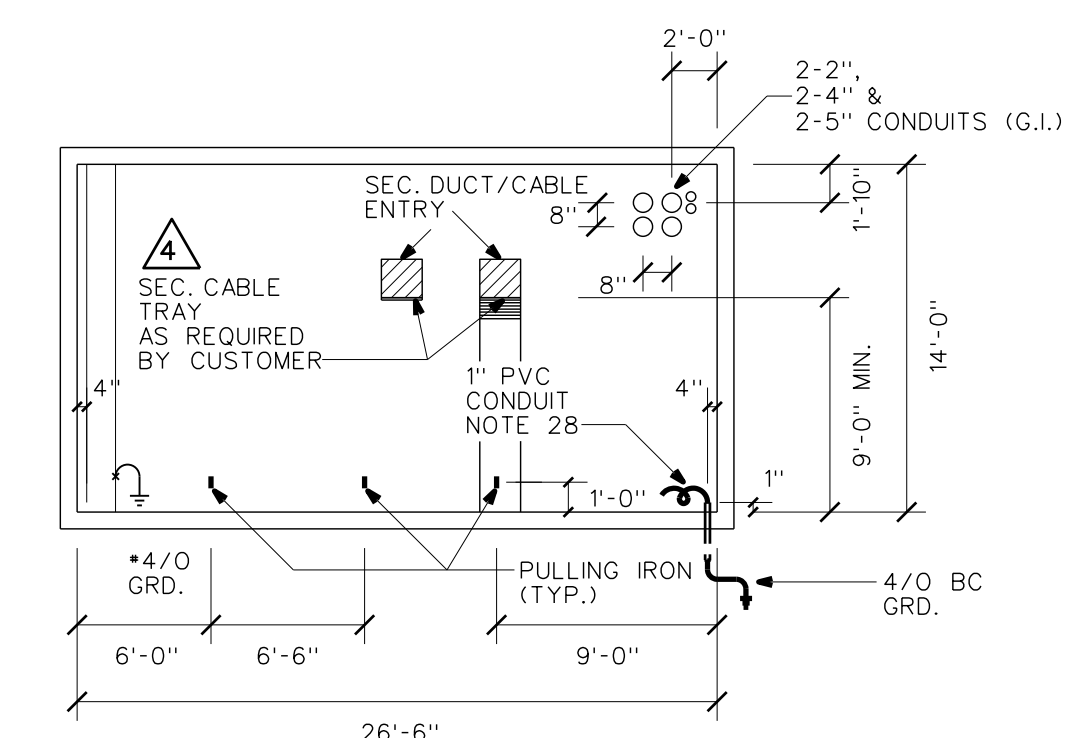
2-2",
2-4" &
2-5" CONDUITS (G.I.)
COMPLETE W/ COUPLINGS
STUBBED 6" BEYOND WALL BY CUSTOMER.



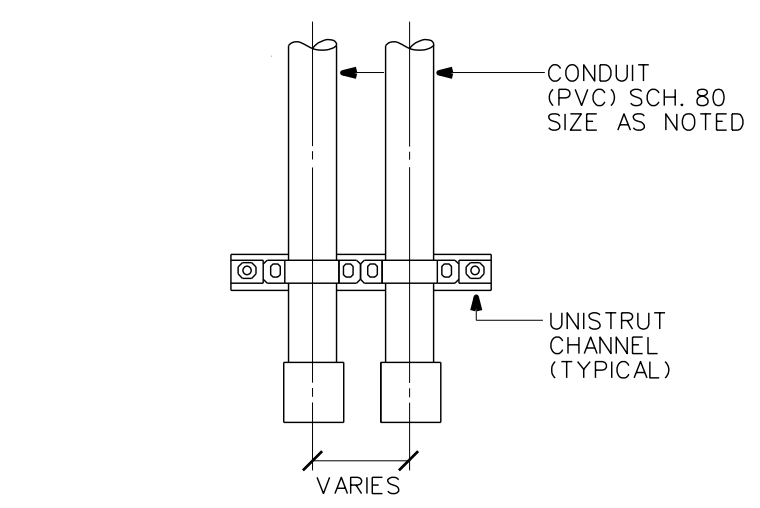
SECTION "A" "A"



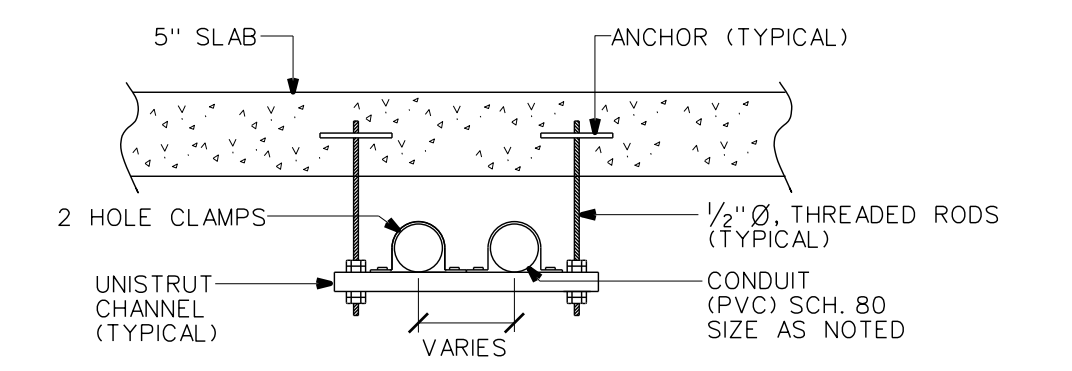
PLAN VIEW
SCALE: 1/8" = 1'-0"



SECTION "C" "C"

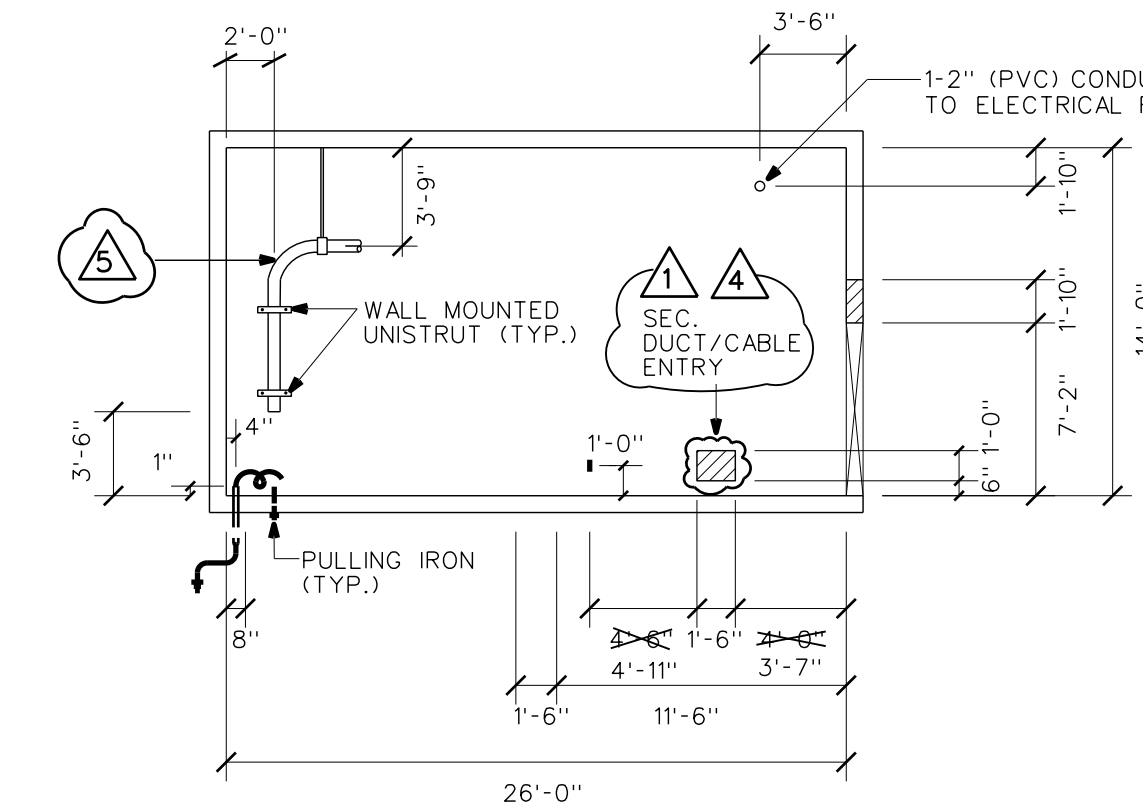


CONDUIT WALL MOUNTED DETAIL (TYPICAL)
NTS



CONDUIT HANGER DETAIL (TYPICAL)
NTS

NOTES: (INSTALL)
1. UNISTRUCT CHANNEL, 1/2" RODS, WASHERS, FITTINGS AND NUTS AS REQUIRED.
2. SUPPORTS AT 6'-0" O.C. AS REQUIRED.
3. PROVIDE DOUBLE NUTS AS REQUIRED.



SECTION "D" "D"

VAULT ROOM #235
PLAN VIEW
SEE DRWG. #32750

VAULT ROOM #229
MEZZANINE LEVEL

- NOTES:
1. A WARNING SIGN (HIGH VOLTAGE) SHALL BE DISPLAYED AT ALL VAULT ENTRANCES.
2. CONTACT HAWAII CONVENTION CENTER AUTHORITY, LYNN W. THOMPSON, GEN. MANAGER, SPECTACOR MANAGEMENT GROUP, PH 944-8833 FOR FUTURE MAINTENANCE OF HECO FACILITIES.
3. ALL PADMOUNTED SWITCHGEAR (PST9-A) SHALL BE EQUIPPED WITH A 24" BASE SPACER, NON COMPARTMENTED.
4. ALL CONDUITS WITHIN VAULT ARE 4" PVC CONDUITS SCHEDULE 40 TO BE FURNISHED & INSTALLED BY HECO, SUBSTATION DIVISION, UNLESS NOTED OTHERWISE.

DWG. NO.
21-1060
23-8011
24-1012
26-6030
26-8032

DWG. NO.
32744 (SHT 1)
32745 (SHT 2)
32746 (SHT 3)
32747 (SHT 4)
32748 (SHT 5)
32750 (SHT 7)
32751 (SHT 8)
32752 (SHT 9)

REFERENCE DRAWINGS
DESCRIPTION
IDENTIFICATION OF UNDERGROUND CABLES
3Ø DEADFRONT PADMOUNTED TRANSFORMER
MULTIPLE SECONDARY CABLE CONNECTION
TERMINATION 1/C FEICN 25KV CABLE LB ELBOW
LB ELBOW APPLICATION

RELATED DRAWINGS
DESCRIPTION
SITE PLAN - GENERAL LAYOUT
ELECTRICAL SITE PLAN
TRANSFORMER VAULT - VAULT ROOM #157
TRANSFORMER VAULT - VAULT ROOM #234
TRANSFORMER VAULT - VAULT ROOMS #229 & #235
SWITCHING VAULT - VAULT ROOM #235
TRANSFORMER VAULT - VAULT ROOM #243
ELECTRICAL ONE LINE DIAGRAM

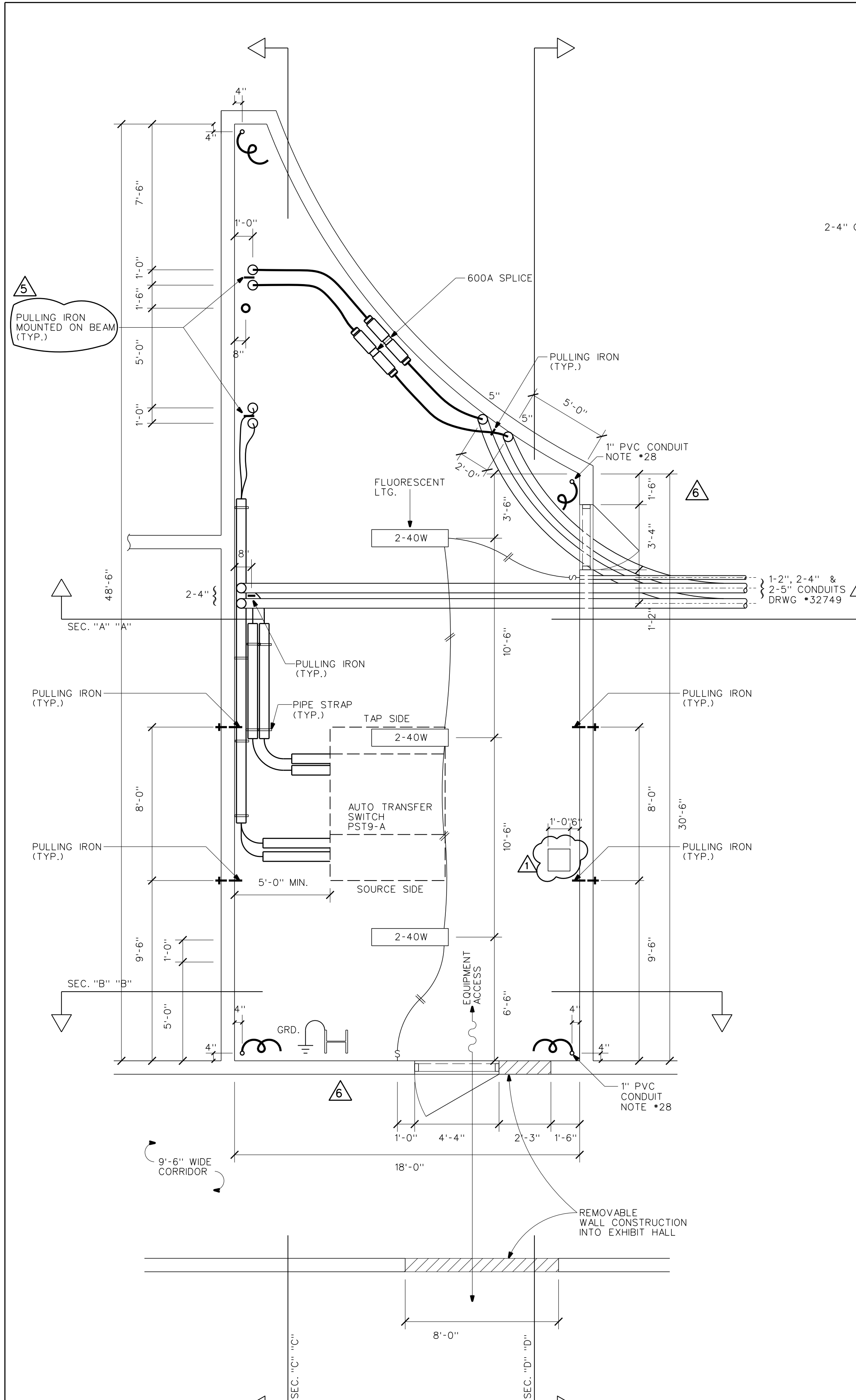
PROJECT NO. P204013
3-PHASE 4W 277/480V U.G. SERVICE
VAULT NOS. 7583A, 7583B
7584, 7584A

NO.	DATE	REVISIONS	BY	CHK'D	APP'D
5	01-31-97	REVISED CONDUIT & PULLING IRON REQUIREMENTS	AC	SB	[Signature]
4	11-25-96	MOVED PRIMARY CONDUITS, SECONDARY DUCT/CABLE ENTRY & CABLE TRAY BY CUSTOMER	GY	SB	[Signature]
3	3-5-96	ADDED SEC. DUCT/CABLE ENTRY & SEC. CABLE TRAY	SB	SB	[Signature]

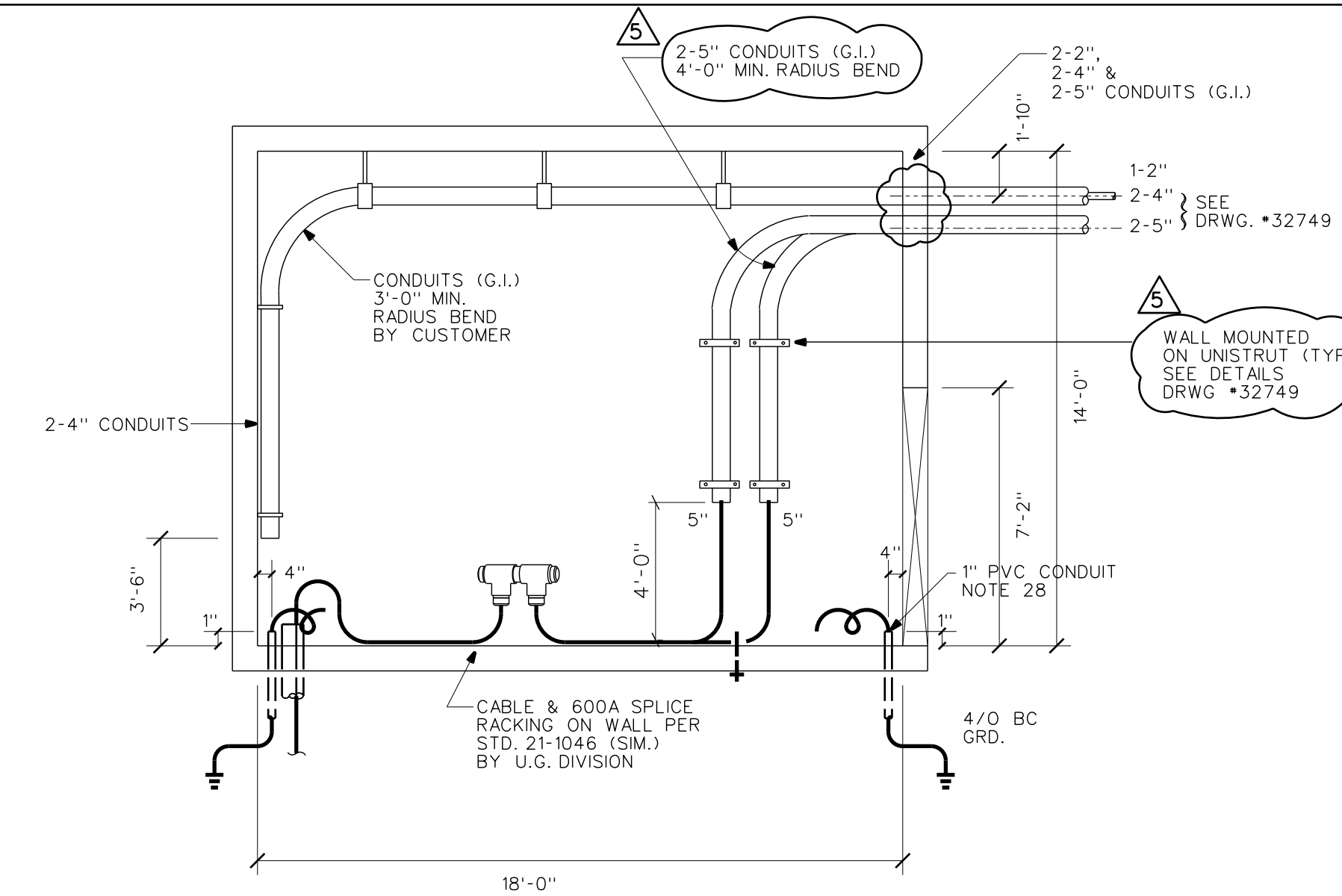
HAWAII CONVENTION CENTER
KAPIOLANI BOULEVARD
3Ø D.F. PADMT TRANSFORMER VAULT

DESIGNED: S. BATULA DRAWN: MSHH DATE: 1-15-96 SCALE: AS NOTED
CHECKED: ELEC. MECH. STRUC. SB CUSTOMER INSTALLATION DEPARTMENT
APPROVAL: [Signatures] 1/15/96 HAWAIIAN ELECTRIC CO., INC.
HONOLULU, HAWAII
DRAWING NUMBER: 32749 REV: 6

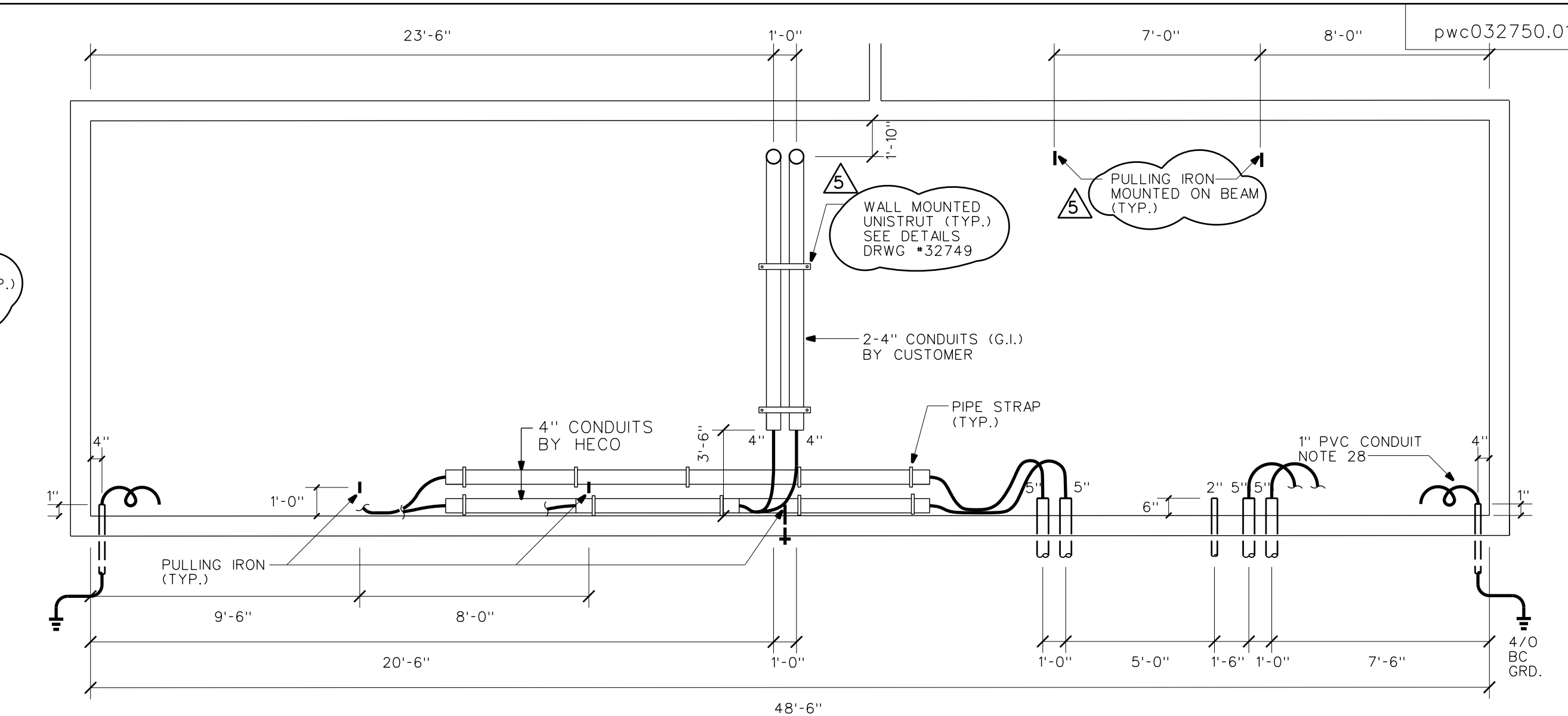
NOTE #28710, 28711, 28712, 28713



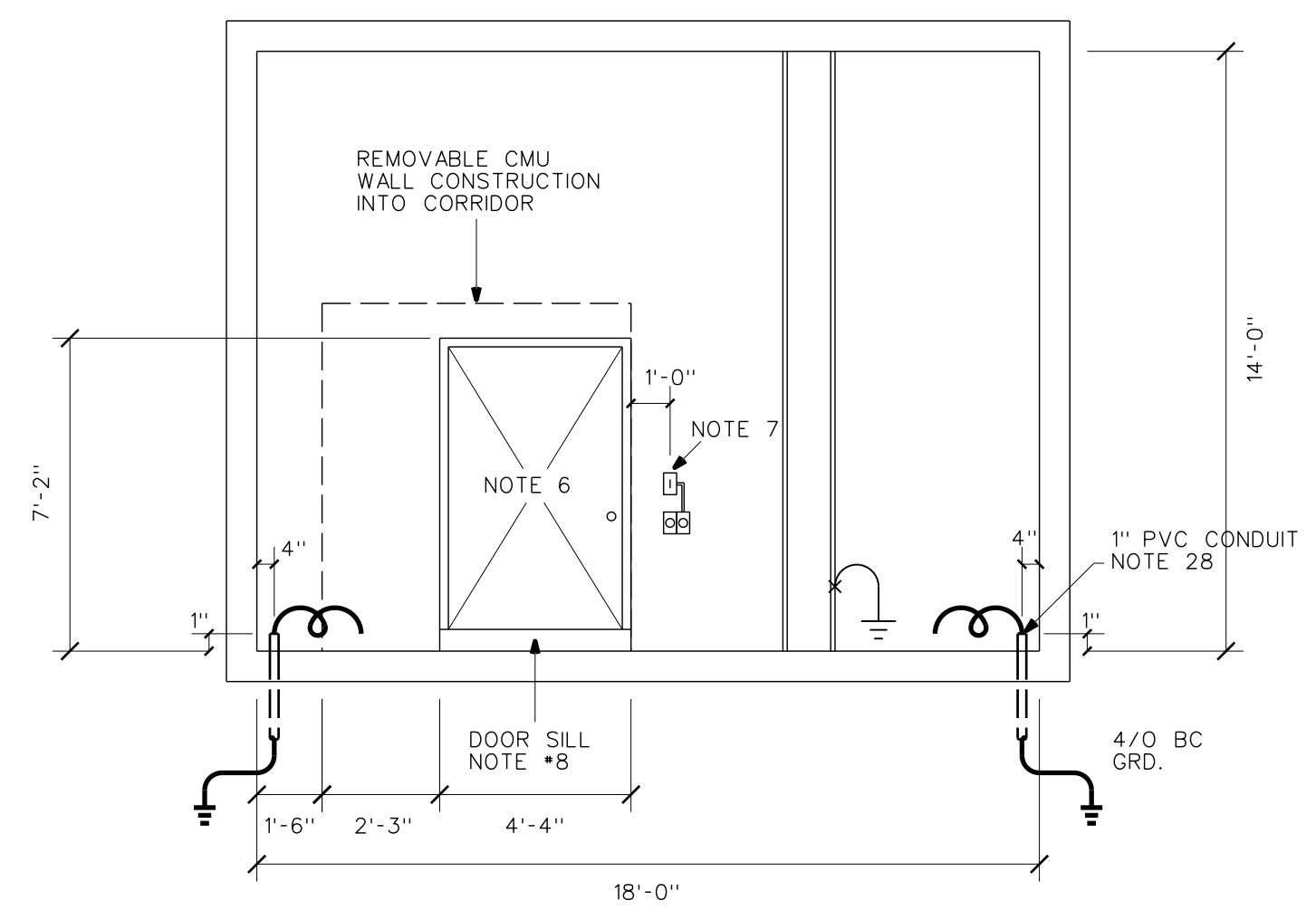
PLAN VIEW
SCALE: 1/4" = 1'-0"



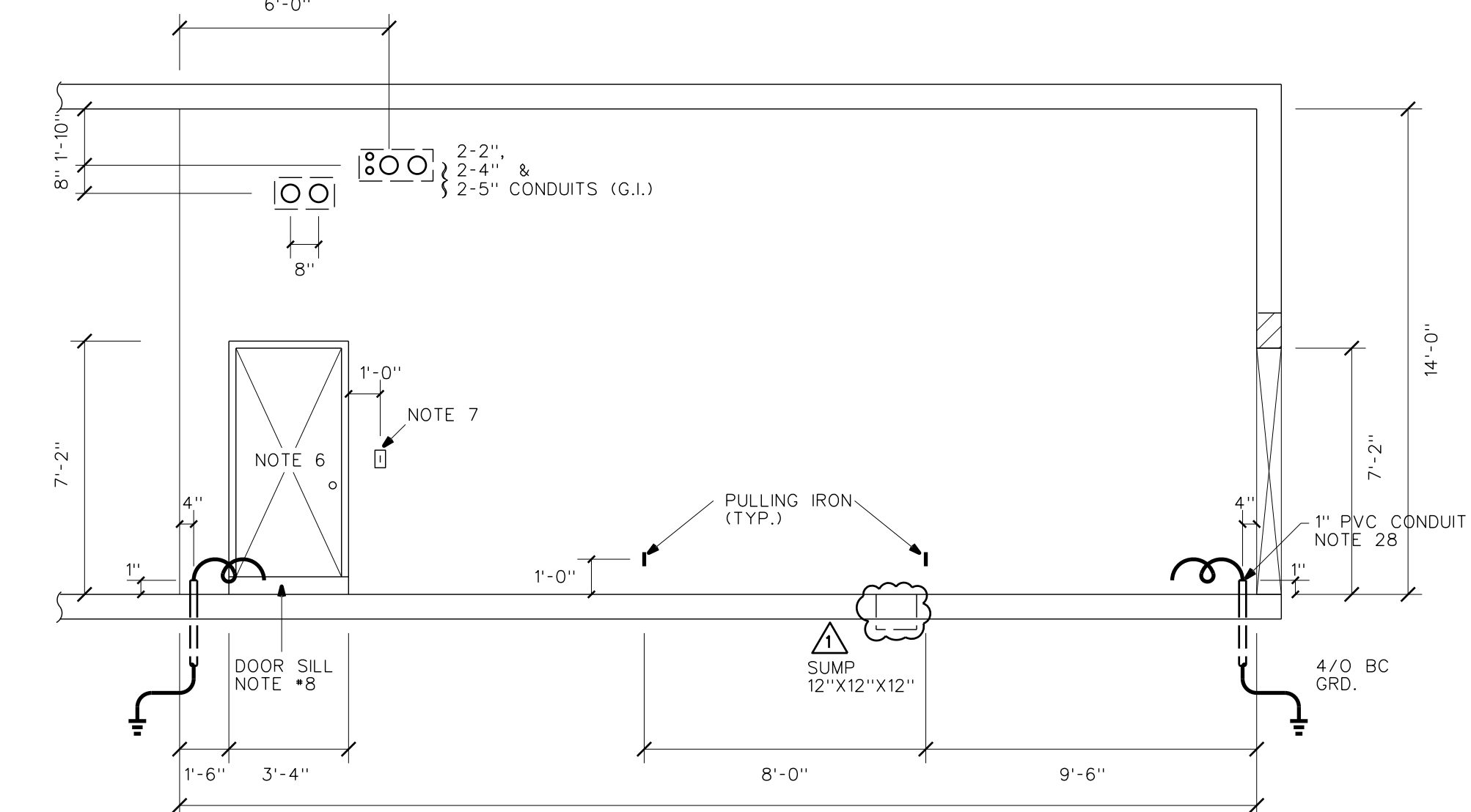
SECTION "A" "A"



SECTION "C" "C"



SECTION "B" "B"



SECTION "D" "D"

**VAULT ROOM #235
MEZZANINE LEVEL**

NOTES:

1. A WARNING SIGN (HIGH VOLTAGE) SHALL BE DISPLAYED AT ALL VAULT ENTRANCES.
2. CONTACT HAWAII CONVENTION CENTER AUTHORITY, LYNN W. THOMPSON GEN. MANAGER, SPECTATOR MANAGEMENT GROUP, PH 944-8833, FOR FUTURE MAINTENANCE OF HECO FACILITIES.
3. ALL PADMOUNTED SWITCHGEAR (PST9-A) SHALL BE EQUIPPED WITH A 24" BASE SPACER, NON COMPARTMENTED.
4. ALL CONDUITS WITHIN VAULT ARE 4" PVC CONDUITS SCHEDULE 40 TO BE FURNISHED & INSTALLED BY HECO, SUBSTATION DIVISION, UNLESS NOTED OTHERWISE.

REFERENCE DRAWINGS

DWG. NO.	DESCRIPTION
21-1060	IDENTIFICATION OF UNDERGROUND CABLES
23-8011	3Ø DEADFRONT PADMOUNTED TRANSFORMER
24-1012	MULTIPLE SECONDARY CABLE CONNECTION
26-6030	TERMINATION 1/C PEICN 25KV CABLE LB ELBOW
26-8032	LB ELBOW APPLICATION

RELATED DRAWINGS

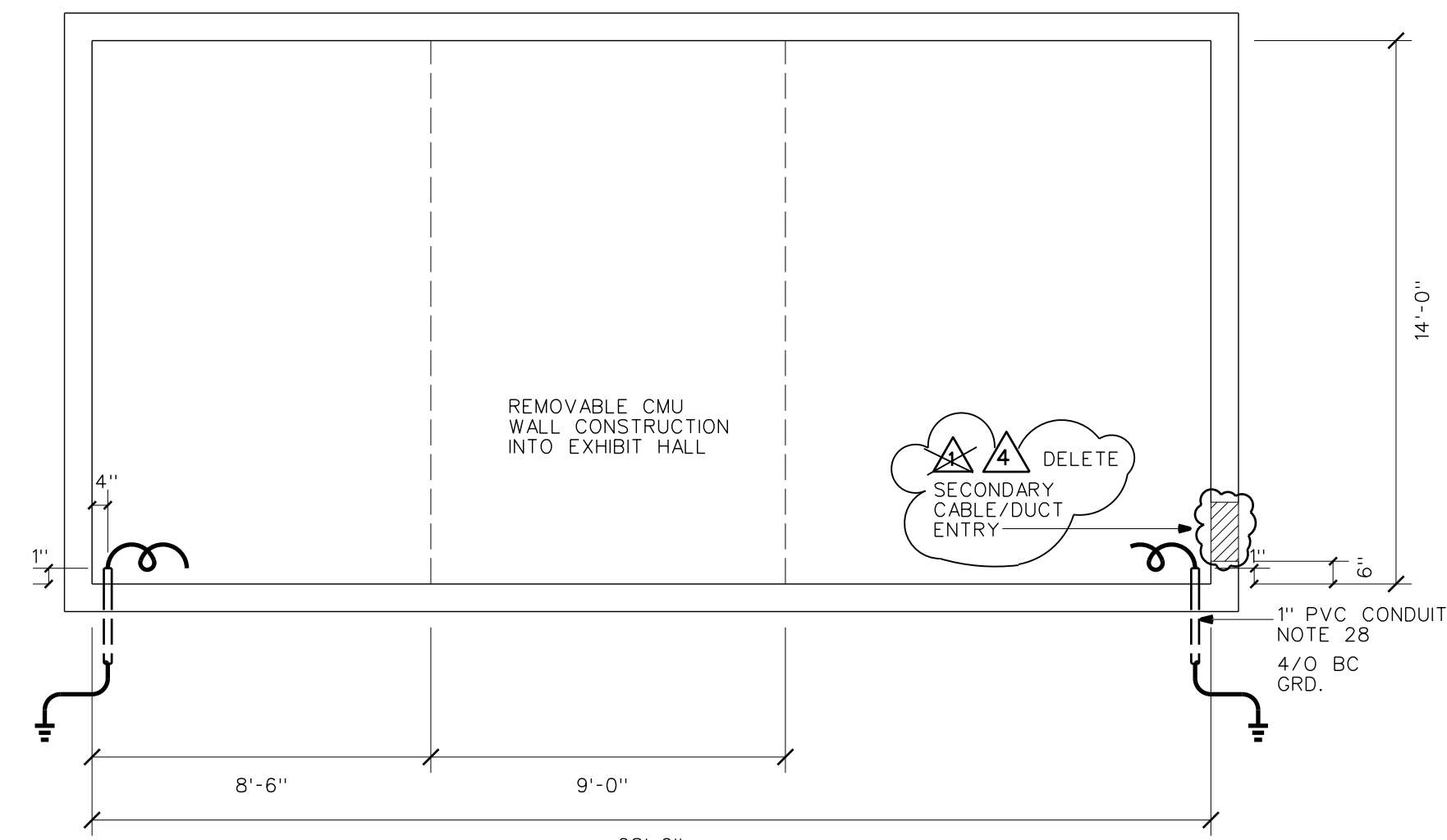
DWG. NO.	DESCRIPTION
32744	(SHT 1) SITE PLAN - GENERAL LAYOUT
32745	(SHT 2) ELECTRICAL SITE PLAN
32746	(SHT 3) TRANSFORMER VAULT - VAULT ROOM #157
32747	(SHT 4) TRANSFORMER VAULT - VAULT ROOM #284
32748	(SHT 5) TRANSFORMER VAULT - VAULT ROOMS #229 & #235
32749	(SHT 6) TRANSFORMER VAULT - VAULT ROOMS #229 & #235
32751	(SHT 8) TRANSFORMER VAULT - VAULT ROOM #243
32752	(SHT 9) ELECTRICAL ONE LINE DIAGRAM

DESCRIPTION
PROJECT NO. P204013
3-PHASE 4W 277/480V U.G. SERVICE
VAULT NO. 2583

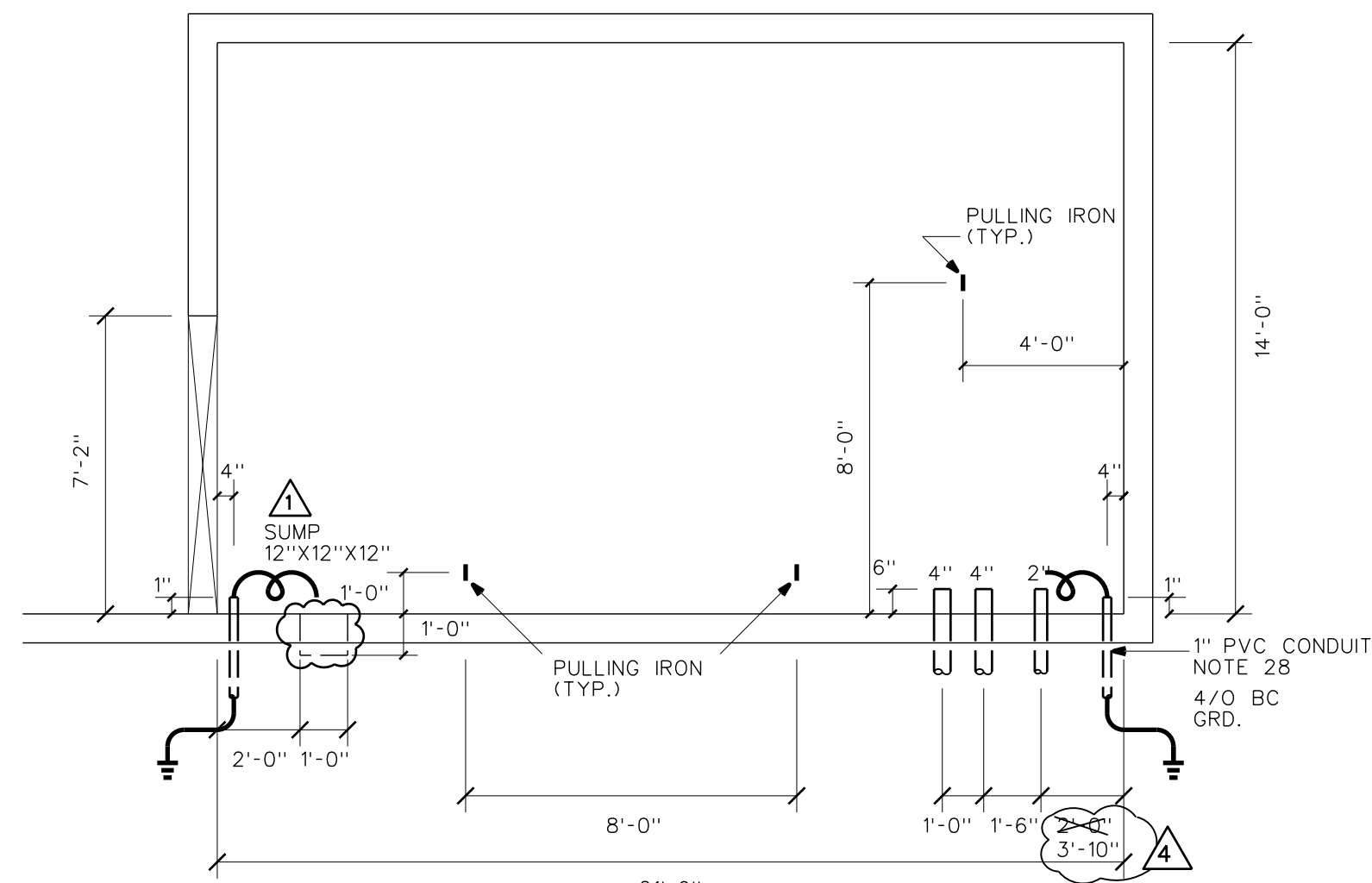
NO.	DATE	REVISIONS	BY	CHK'D	APP'D
5	01-31-97	REVISED CONDUIT AND PULLING IRON REQUIREMENTS	AC	SB	J
4	11-25-96	ADDED MISCELLANEOUS NOTES	GY	SB	J
3	3-5-96	ADDED PUMP SUMP	SB	SB	J

**HAWAII CONVENTION CENTER
KAPIOLANI BOULEVARD
SWITCHING VAULT**

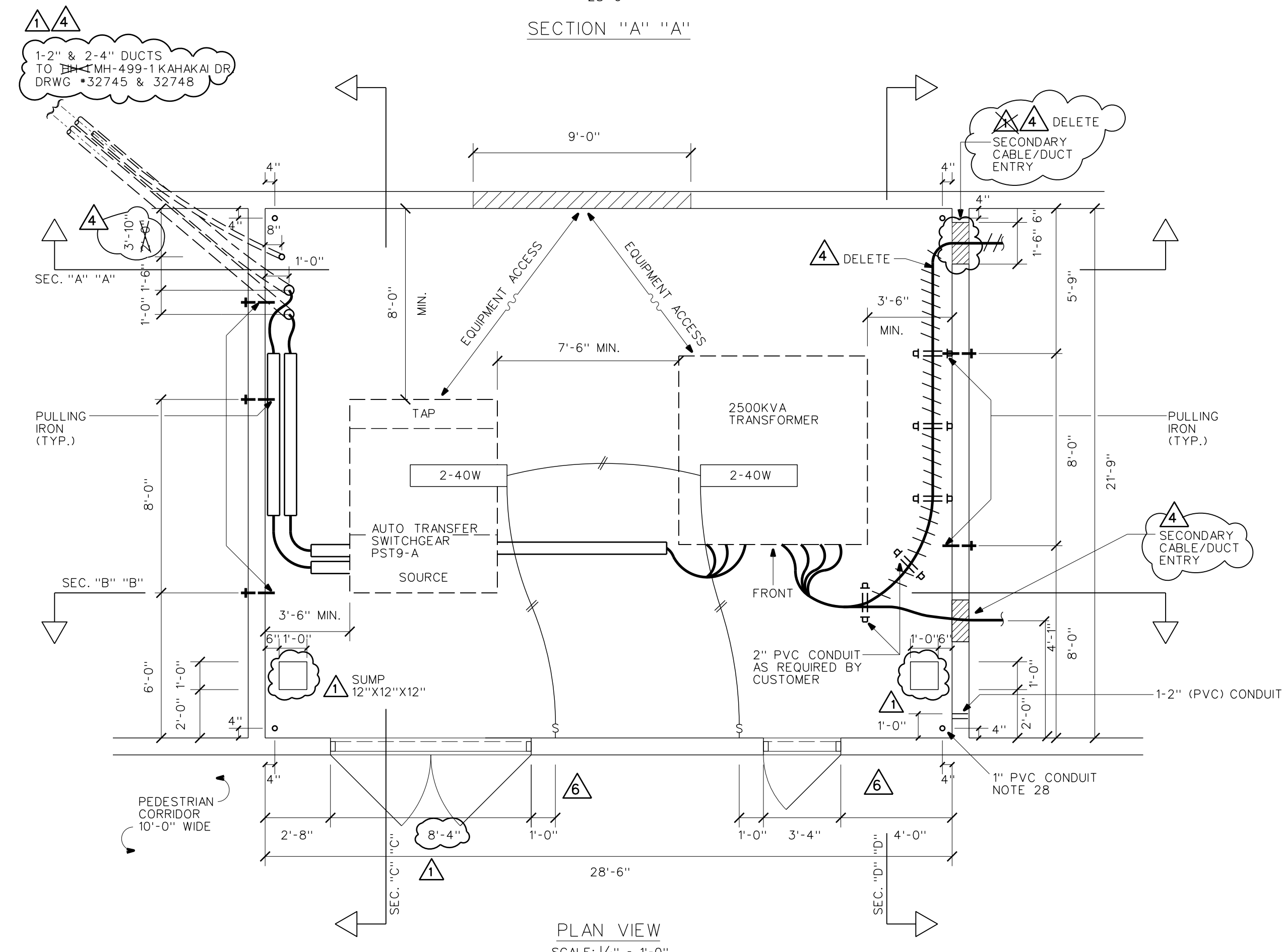
DESIGNED: S. BATULA	DRAWN: MSHH	DATE: 1-15-96	SCALE: AS NOTED
CHECKED: ELEC. MECH. STRUC. SB	CUSTOMER INSTALLATION DEPARTMENT HAWAIIAN ELECTRIC CO., INC. HONOLULU, HAWAII		
APPROVAL: <i>Jerry Vaughan</i> <i>Ed [Signature]</i>	1/15/96	1/16/96	REV
DRAWING NUMBER			REV
32750			6



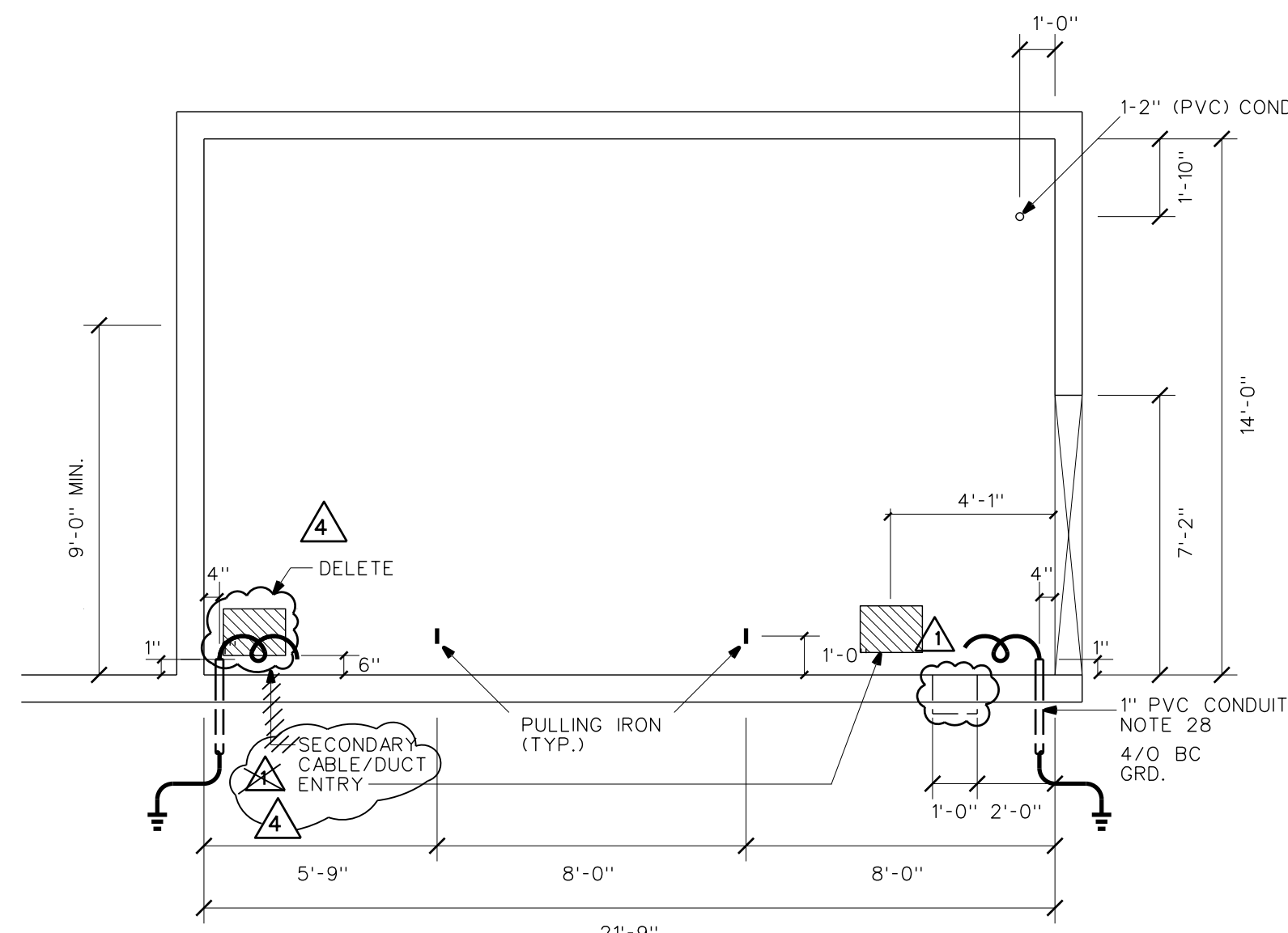
SECTION "A" "A"



SECTION "C" "C"



PLAN VIEW
SCALE: 1/4" = 1'-0"



SECTION "D" "D"

**VAULT ROOM #243
MEZZANINE LEVEL**

NOTES:

1. A WARNING SIGN (HIGH VOLTAGE) SHALL BE DISPLAYED AT ALL VAULT ENTRANCES.
2. CONTACT HAWAII CONVENTION CENTER AUTHORITY, LYNN W. THOMPSON, GEN. MANAGER, SPECTACOR MANAGEMENT GROUP, PH 944-8833 FOR FUTURE MAINTENANCE OF HECO FACILITIES.
3. ALL PADMOUNTED SWITCHGEAR (PST6-A) SHALL BE EQUIPPED WITH A 18" BASE SPACER, NON COMPARTMENTED.
4. ALL CONDUITS WITHIN VAULT ARE 4" PVC CONDUITS SCHEDULE 40 TO BE FURNISHED & INSTALLED BY HECO, SUBSTATION DIVISION, UNLESS NOTED OTHERWISE.

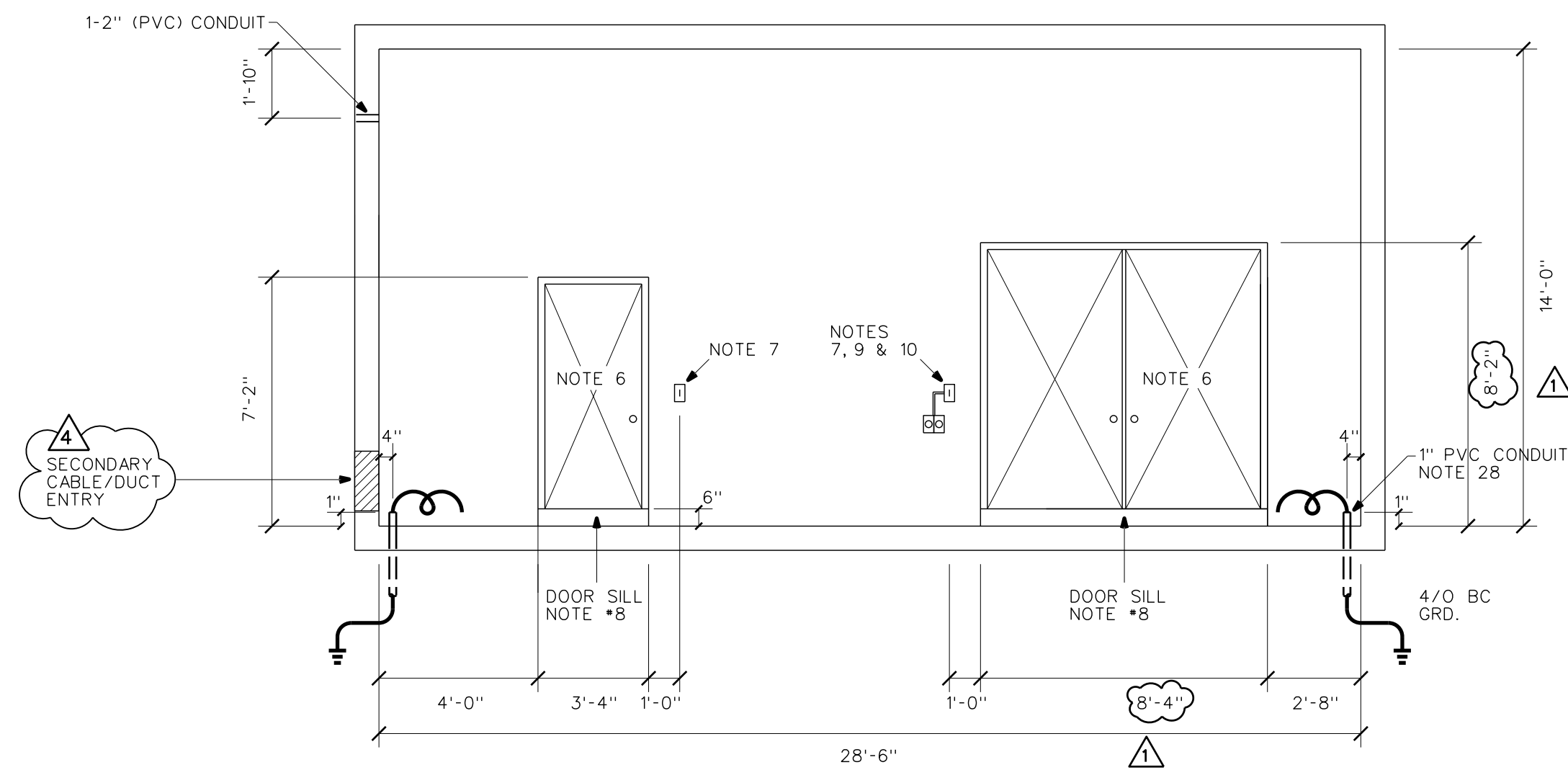
REFERENCE DRAWINGS

DWG. NO.	DESCRIPTION
21-1060	IDENTIFICATION OF UNDERGROUND CABLES
23-8011	3Ø DEADFRONT PADMOUNTED TRANSFORMER
24-1012	MULTIPLE SECONDARY CABLE CONNECTION
26-6030	TERMINATION 1/C PEICN 25KV CABLE LB ELBOW
26-8032	LB ELBOW APPLICATION

RELATED DRAWINGS

DWG. NO.	DESCRIPTION
32744	(SHT 1) SITE PLAN - GENERAL LAYOUT
32745	(SHT 2) ELECTRICAL SITE PLAN
32746	(SHT 3) TRANSFORMER VAULT - VAULT ROOM #157
32747	(SHT 4) TRANSFORMER VAULT - VAULT ROOM #284
32748	(SHT 5) TRANSFORMER VAULT - VAULT ROOMS #229 & #235
32749	(SHT 6) TRANSFORMER VAULT - VAULT ROOMS #229 & #235
32750	(SHT 7) SWITCHING VAULT - VAULT ROOM #235
32752	(SHT 9) ELECTRICAL ONE LINE DIAGRAM

PROJECT NO. P204013
3-PHASE 4W 277/480V U.G. SERVICE
VAULT NOS. 7582, 7582A



SECTION "B" "B"

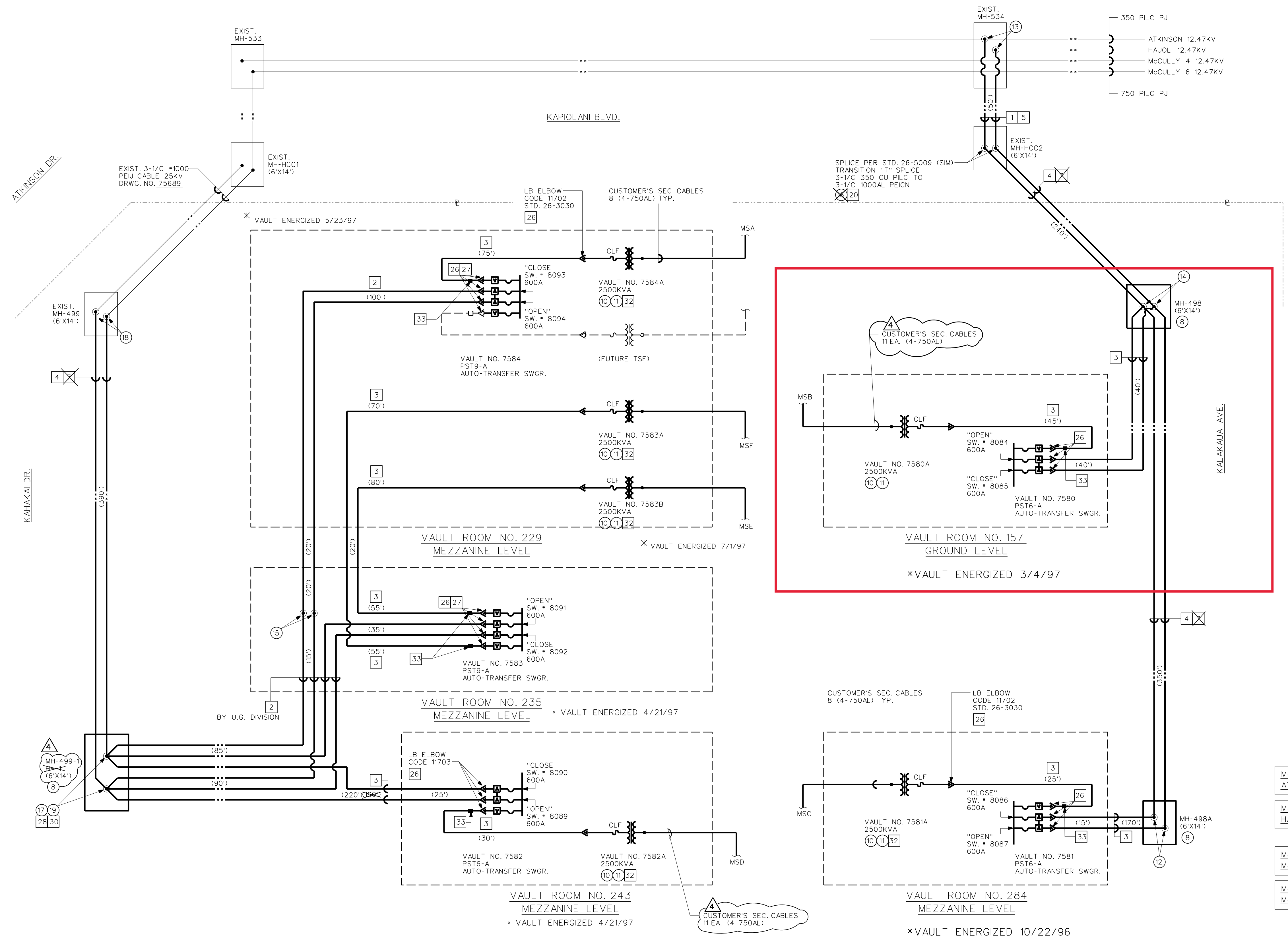
NOTE #28707
#28708

NO.	DATE	REVISIONS	BY	CHK'D	APP'D
11-25-96		REVISED PRIMARY/SECONDARY DUCT ENTRY BY CUSTOMER	GY	SB	
3-5-96		CHANGED DOOR SIZE & ADDED PUMP SUMPS	SB	SB	
		SECONDARY CABLE/DUCT ENTRY LOCATION			

**HAWAII CONVENTION CENTER
KAPIOLANI BOULEVARD**

3Ø D.F. PADMT TRANSFORMER VAULT

DESIGNED: S. BATULA	DRAWN: MSHH	DATE: 1-15-96	SCALE: AS NOTED
CHECKED: ELEC. MECH. STRUC. SB	CUSTOMER INSTALLATION DEPARTMENT HAWAIIAN ELECTRIC CO., INC. HONOLULU, HAWAII		
APPROVAL: <i>James Vaughan</i>	1/15/96	DRAWING NUMBER	REV
<i>Ed [Signature]</i>	1/16/96	32751	6



SUMMARY				1ST.	2ND.
LINE NO.	SMU/STOCK NO.	VARIABLES	DESCRIPTION	QTY.	QTY.
1	07575 ACT. 561		3-1/2 350 CU PILC PJ 12KV	100'	
2	07743 ACT. 561		3-1/2 500 AL PEICN 25KV		730
3	07744 ACT. 681		3-1/2 1/0 AL PEICN 25KV	600'	276
4	07750 ACT. 561		3-1/2 1000 AL PEICN 25KV	1280'	780'
5	08024 ACT. 681		4/0 BC 7 STRD.	195'	340'
6					
7	08027 ACT. 561		350KCM BC 19 STRD.	1276'	346'
8	21-1046-1		RACKING & GROUND BUS DETAILS, 6X11 HH	2	1
9					
10	23-8011-1V		3 PH DF PADMT TRANSF, RADIAL FEED 1/0 AL 25KV	2	4
11	24-1012-V		MULTIPLE CABLE CONN 3 PH PADMT TRANSF SEC.	3.5	6.5
12	26-5009-5		600A PREFAB SPLICE 1000-1/0 AL PEICN 25KV	6	
13	26-1007-4		Y SPLICE 3/2 PILC-PJ 350-350-350	6	
14	26-5009-11		600A PREFAB SPLICE 1000-1000-1/0 AL PEICN 25KV	6	
15	26-4065-3		PREFAB PERM TYPE SPLICE 3-1/2 500 AL PEICN 25KV		2
16	26-5009-3		600A PREFAB SPLICE 1000-500 AL PEICN 25KV		
17	26-5009-13		600A PREFAB SPLICE 500-500-1/0 AL PEICN 25KV		3
18	26-5009-1		600A PREFAB SPLICE 1000-1000 AL PEICN 25KV		3
19	26-5009-9		600A PREFAB SPLICE 1/2 1000-500-500 AL PEICN 25KV		6
20	SPECIAL		QUICK ADAPTER KIT, OIL STOP	6	
21	00620 ACT. 601		GROUND ROD, 5/8" X 8'-0" CW	8	8
22	12108 ACT. 601		CONNECTOR SPLIT BOLT CU 4/0 MCM	10	20
23	29534 ACT. 781		CONDUIT PVC 1-BE SCH 40 4 IN. X 10 FT.	1	15
24	00623 ACT. 601		CLP GROUND ROD CCS 3/4 INCH	6	8
25	12111 ACT. 601		CONNECTOR SPLIT BOLT CU 350 MCM		2
26	11702 ACT. 821		TERM CBL ELBOW LB 25KV 1/0 AL	24	30
27	11704 ACT. 821		TERM CBL ELBOW LB 25KV 500 AL		12
28	11712 ACT. 581		TERM CBL ELBOW DB 25KV 1/0 AL		6
29	11720 ACT. 581		PLUG ELL (FEMALE) 25KV 600A		
30	11721 ACT. 581		PLUG ELL (MALE) 25KV 600A		12
31	06554 ACT. 681		GRIP CBL RIS U-EYE 27" 3-1/2" - 4" CBL	2	6
32	11240 ACT. 781		PAD NEOPRENE 18"X18"X3/4"	10	40
33	03125 ACT. 561		INDICATOR, CABLE FAULT, 300A	6	12

EXISTING	PROPOSED	REMOVALS	DESCRIPTION
---	---		CABLE, PRIM., AL, PEICN, 12/25KV
---	---		CABLE, SECONDARY/SERVICE, SIZE AS INDICATED
□	□		HANDHOLE/MANHOLE, SIZE AS INDICATED
⊕	⊕		3 PHASE PADMOUNT TRANSFORMER, WITH LOADBREAK ELBOW
⊕	⊕		SPLICES
⊕	⊕		ELBOW, LOADBREAK, FUSED, CUTOFF, FUSE SIZE AS INDICATED

EXISTING	PROPOSED	DESCRIPTION
⊕	⊕	PST6-9 (AUTOMATIC TRANSFER) WITH VACUUM FAULT INTERRUPTER
⊕	⊕	PST9-A (AUTOMATIC TRANSFER) WITH VACUUM FAULT INTERRUPTER

- McCULLY 2 (177) ATKINSON CKT. 12.47KV (1525)
- McCULLY 3 (179) HAUOLI CKT. (1575)
- McCULLY 5 (480) McCULLY 4 12.47KV. (8067)
- McCULLY 6 (481) McCULLY 6 12.47KV. (8065)

ONE LINE DIAGRAM

- SUBSTATION DIVISION (INSTALL)**
- 3Ø 12470GRDY/7200 X 24940GRDY/14440-480Y/277 (DUAL) D.F. PADMOUNT TRANSFORMERS (NO TAPS) WITH INTERNAL FUSE (SPECIAL). SET PRIMARY AT 12.47KV POSITION. MILD STEEL, CODE 244.
 - AUTOMATIC TRANSFER SWITCHGEAR (PST6-A) MILD STEEL, 25KV INDOOR TYPE.
 - AUTOMATIC TRANSFER SWITCHGEAR (PST9-A) MILD STEEL, 25KV INDOOR TYPE.
 - INSTALL NEOPRENE VIBRATION PADS (18"X18"X3/4") AS NECESSARY FOR ALL PADMOUNT TRANSFORMERS (MEZZANINE LEVEL) FAB 50 (OR FAB 200) WISDOM INDUSTRIES PH. 847-1223 (CODE 11240).
- NOTE: APPLY FIRE STOP COMPOUND AS NECESSARY ON ALL DUCT OPEN PER STD. 23-1035.

- REFERENCE DRAWINGS**
- | DWG. NO. | DESCRIPTION |
|----------|--|
| 21-1060 | ELECTRICAL SITE PLAN |
| 23-8011 | IDENTIFICATION OF UNDERGROUND CABLES |
| 24-1012 | 3Ø DEADFRONT PADMOUNTED TRANSFORMER |
| 26-6030 | MULTIPLE SECONDARY CABLE CONNECTION |
| 26-8032 | TERMINATION 1/2" PEICN 25KV CABLE LB ELBOW |
| 26-8032 | LB ELBOW APPLICATION |
| 78931 | KEWALO - KAMOKU 138KV / 25KV |
- RELATED DRAWINGS**
- | DWG. NO. | DESCRIPTION |
|----------|----------------------------|
| 32744 | SITE PLAN - GENERAL LAYOUT |
| 32745 | (SHT 1) |
| 32746 | (SHT 2) |
| 32747 | (SHT 3) |
| 32748 | (SHT 4) |
| 32749 | (SHT 5) |
| 32749 | (SHT 6) |
| 32750 | (SHT 7) |
| 32751 | (SHT 8) |

PROJECT NO. P204013
 3-PHASE 4W 277/480V U.G. SERVICE
 VAULT NOS. 7580, 7580A, 7580B, 7580C, 7580D, 7580E, 7580F, 7580G, 7580H, 7580I, 7580J, 7580K, 7580L, 7580M, 7580N, 7580O, 7580P, 7580Q, 7580R, 7580S, 7580T, 7580U, 7580V, 7580W, 7580X, 7580Y, 7580Z

11-25-96	ADDED BREAKER NOS., VLT. NO. 7581	GY	SB	
07-29-96	ADDED SUB/CKT NOS., MCCULLY SUB. 5 & 6	GY	SB	
3-5-96	INSTALL 3PH FAULT INDICATOR LOAD SIDE OF SWITCH	SB	SB	
	CHANGED CABLE & SPLICES AND ADDED NOTE #4			

**HAWAII CONVENTION CENTER
 KAPIOLANI BOULEVARD**

ONE LINE DIAGRAM

DESIGNED: S. BATULA | DRAWN: MSHH | DATE: 1-15-96 | SCALE: AS NOTED

CHECKED: [Signature] | MECH: [Signature] | STRUC: [Signature]

APPROVAL: [Signature] | 1/15/96

CUSTOMER INSTALLATION DEPARTMENT
 HAWAIIAN ELECTRIC CO., INC.
 HONOLULU, HAWAII

DRAWING NUMBER: **32752** | REV: **6**